

ROCHESTER ONE DEPARTURE

ST PAUL DOWNTOWN HOLMAN FIELD (STP)

AL-263 (FAA)

ST. PAUL, MINNESOTA

TOP ALTITUDE:
(JETS) 7000/
(PROPS) 5000

ATIS 118.35

CLNC DEL

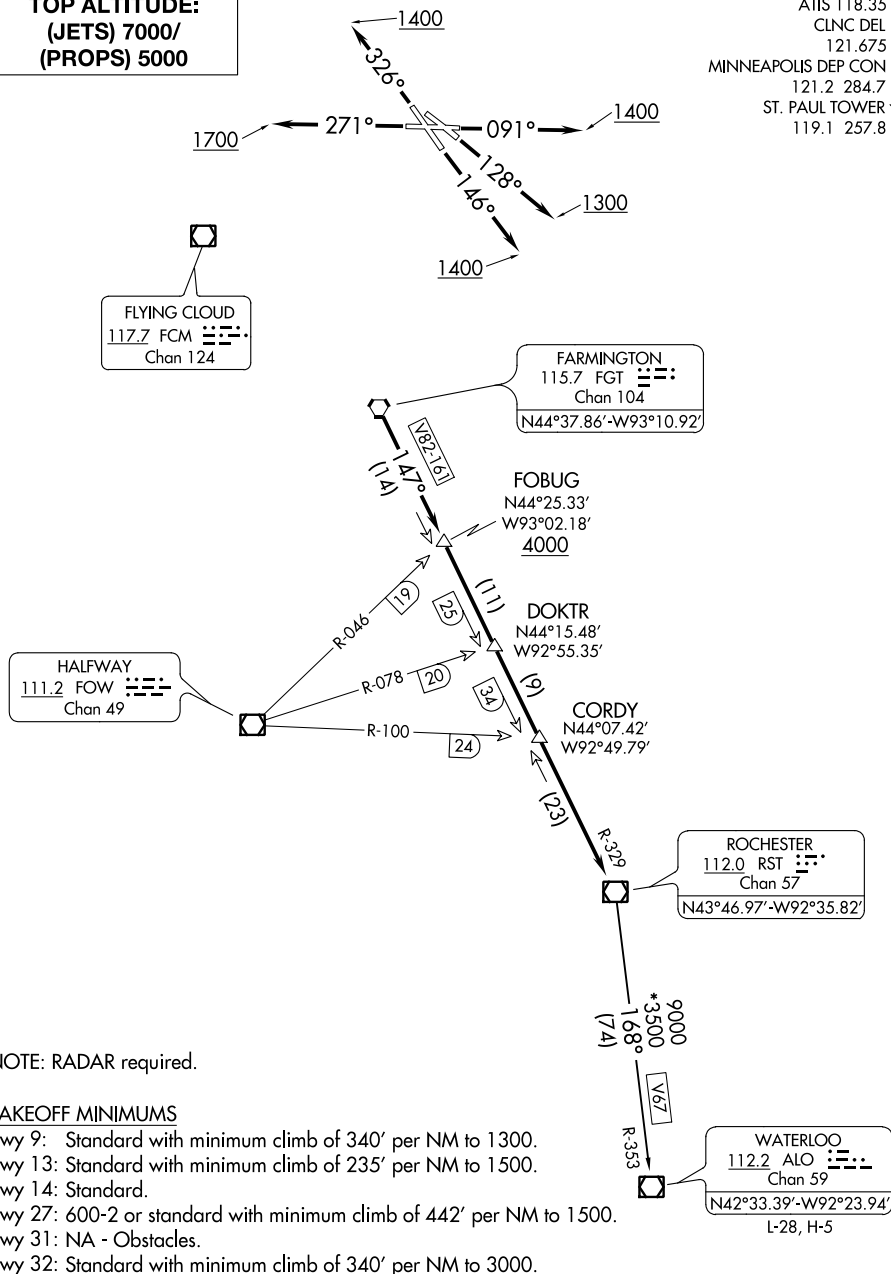
121.675

MINNEAPOLIS DEP CON

121.2 284.7

ST. PAUL TOWER ★

119.1 257.8



NOTE: RADAR required.

TAKEOFF MINIMUMS

Rwy 9: Standard with minimum climb of 340' per NM to 1300.

Rwy 13: Standard with minimum climb of 235' per NM to 1500.

Rwy 14: Standard.

Rwy 27: 600-2 or standard with minimum climb of 442' per NM to 1500.

Rwy 31: NA - Obstacles.

Rwy 32: Standard with minimum climb of 340' per NM to 3000.

(NARRATIVE ON FOLLOWING PAGE)

NOTE: Chart not to scale.

ST. PAUL, MINNESOTA

ST PAUL DOWNTOWN HOLMAN FIELD (STP)

ROCHESTER ONE DEPARTURE

(RST1.RST) 13SEP18

NC-1, 03 DEC 2020 to 31 DEC 2020