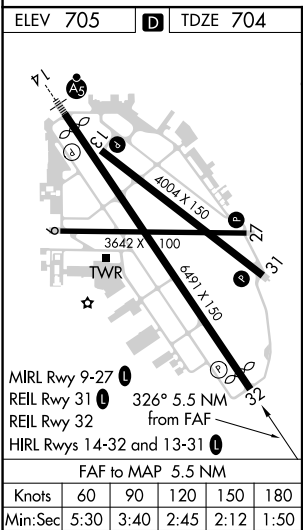
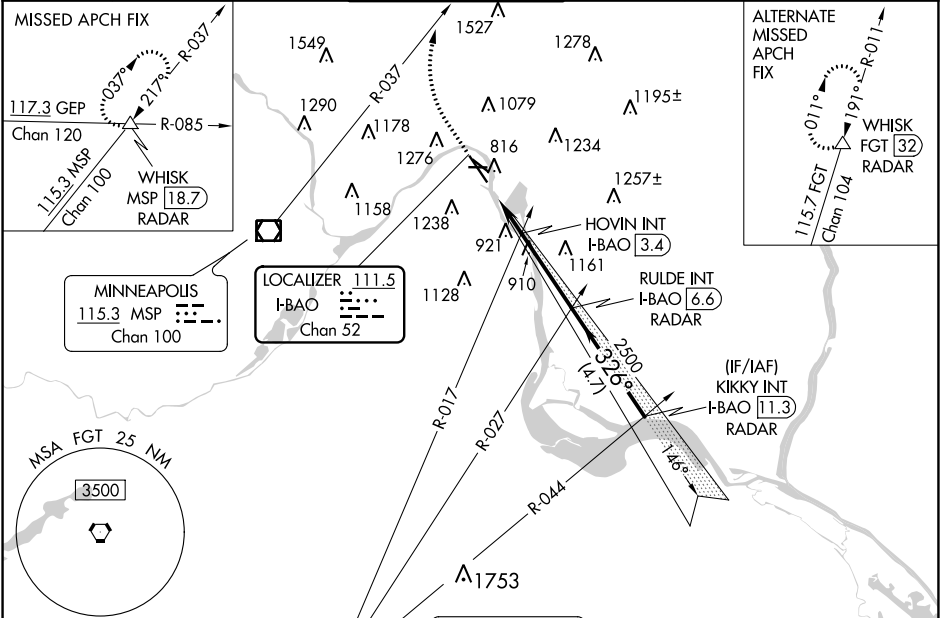


LOC/DME I-BAO	APP CRS	Rwy Idg	6109
111.5	326°	TDZE	704
Chan 52		Apt Elev	705

ILS or LOC RWY 32
ST PAUL DOWNTOWN HOLMAN FIELD (STP)

DME or RADAR required. RADAR required for procedure entry.	MISSED APPROACH: Climb to 1300 then climbing right turn to 4000 on heading 010° and MSP R-037 to WHISK INT MSP 18.7 DME/RADAR and hold.
▼ Rwy 32 helicopter visibility reduction below RVR 4000 NA. Inop table does not apply to S-ILS 32 all Cats and S-LOC all Cats. HOVIN FIX MINIMUMS: Inop table does not apply to Cats A/B. For inop ALS, increase Cats C/D visibility to 1 3/8 SM.	

ATIS	MINNEAPOLIS APP CON	ST. PAUL TOWER *	GND CON	CLNC DEL	UNICOM
118.35	121.2 335.65	119.1 (CTAF) 0 257.8	121.675	121.675	122.95



FARMINGTON
115.7 FGT
Chan 104

1300

4000
hdg
010°

MSP
R-037

WHISK
△

RULDE INT
I-BAO [6.6]
RADAR

KIKKY INT
I-BAO [11.3]
RADAR

*LOC only

I-BAO [1.1]

HOVIN INT
I-BAO [3.4]

2500

326°

2500

GS 3.00°
TCH 40

1.5 NM

0.8 NM

3.2 NM

4.7 NM

CATEGORY	A		B	C	D
S-ILS 32	1011/50 307 (400-1)				
S-LOC 32	1460/55 756 (800-1)	1460/60 756 (800-1¼)	1460-2	756 (800-2)	
CIRCLING	1580-1¼ 875 (900-1¼)	1580-2½ 875 (900-2½)	1580-2¾ 875 (900-2¾)	1580-2¾ 875 (900-2¾)	
HOVIN FIX MINIMUMS					
S-LOC 32	1220/55 516 (600-1)	1220-1¼ 516 (600-1¼)	1220-1¼ 516 (600-1¼)	1220-1¼ 516 (600-1¼)	
CIRCLING	1580-1¼ 875 (900-1¼)	1580-2½ 875 (900-2½)	1580-2¾ 875 (900-2¾)	1580-2¾ 875 (900-2¾)	

NC-1, 03 DEC 2020 to 31 DEC 2020

NC-1, 03 DEC 2020 to 31 DEC 2020