

LOC/DME I-VKG 111.5 Chan 52	APP CRS 146°	Rwy Idg 6148 TDZE 705 Apt Elev 705
---	------------------------	---

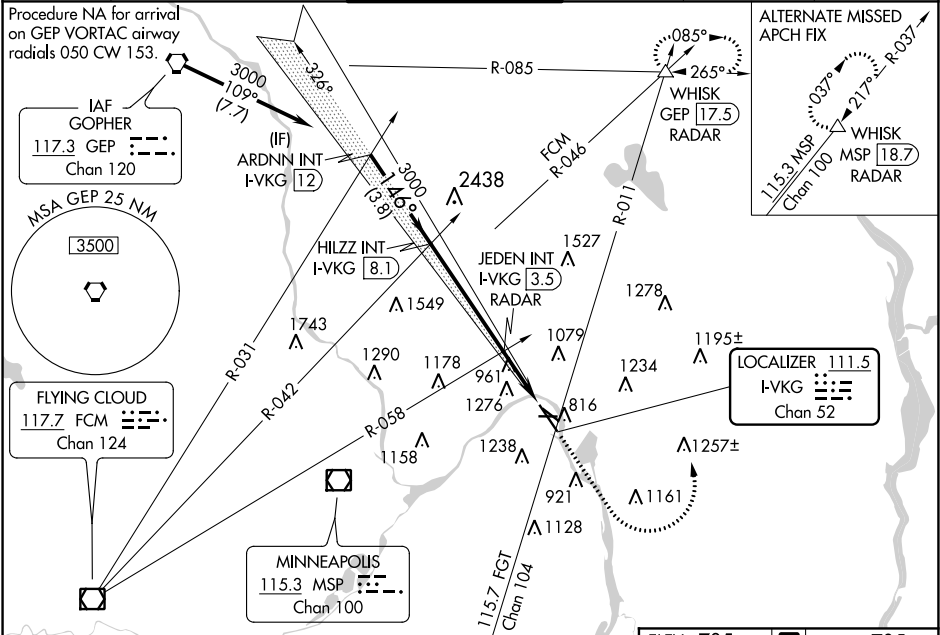
ILS or LOC RWY 14
ST PAUL DOWNTOWN HOLMAN FIELD (STP)

⚠ Inop table does not apply to S-ILS 14. Rwy 14 helicopter visibility reduction below RVR 4000 NA. For inop ALS, increase S-LOC 14 Cat A visibility to RVR 5500, Cat B visibility to RVR 6000, and Cat C/D visibility to 2½ SM.

MALSR

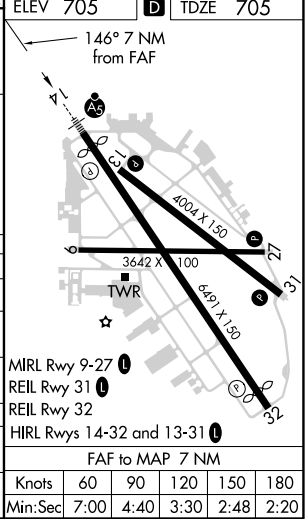
MISSED APPROACH: Climb to 1700 then climbing left turn to 3000 on heading 355° and on FCM VOR/DME R-046 to WHISK INT/GEF 17.5 DME/RADAR and hold.

ATIS 118.35	MINNEAPOLIS APP CON 121.2 335.65	ST. PAUL TOWER ★ 119.1 (CTAF) 257.8	GND CON 121.675	CLNC DEL 121.675	UNICOM 122.95
-----------------------	--	---	---------------------------	----------------------------	-------------------------



VGSI and ILS glidepath not coincident (VGSI Angle 3.00/TCH 50).

ARDNN INT I-VKG [12]	HILZZ INT I-VKG [8.1]	JEDEN INT I-VKG [3.5] RADAR	*LOC only.
3000	3000	*1520	
3.8 NM	4.6 NM	0.5 NM	1.9 NM
A	B	C	D
S-ILS 14	955/40 250 (300-¾)		
S-LOC 14	1520/40 815 (900-¾) 1520-1⅞ 815 (900-1⅞)		
CIRCLING	1580-1¼ 875 (900-1¼) 1580-2½ 875 (900-2½) 1580-2¾ 875 (900-2¾)		
JEDEN FIX MINIMUMS			
S-LOC 14	1360/40 655 (700-¾) 1360-1⅓ 655 (700-1⅓)		
CIRCLING	1580-1¼ 875 (900-1¼) 1580-2½ 875 (900-2½) 1580-2¾ 875 (900-2¾)		



NC-1, 03 DEC 2020 to 31 DEC 2020

NC-1, 03 DEC 2020 to 31 DEC 2020