

VORTAC HON	APP CRS	Rwy Idg	7201
117.6	124°	TDZE	1289
Chan 123		Apt Elev	1289

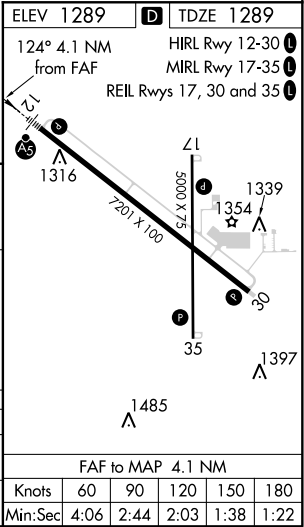
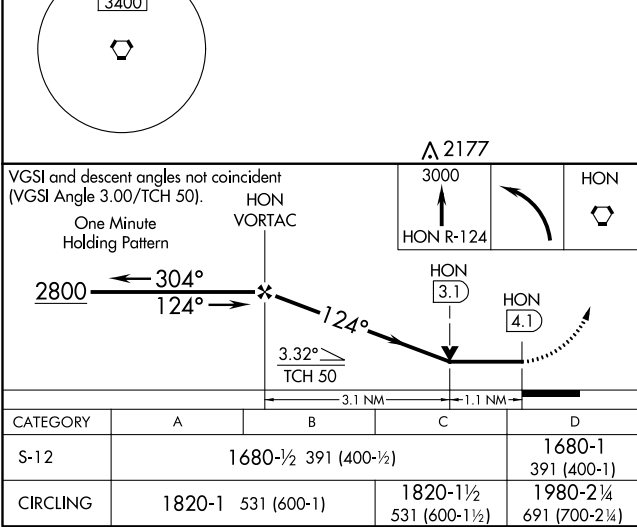
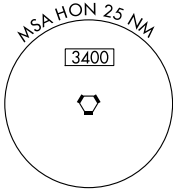
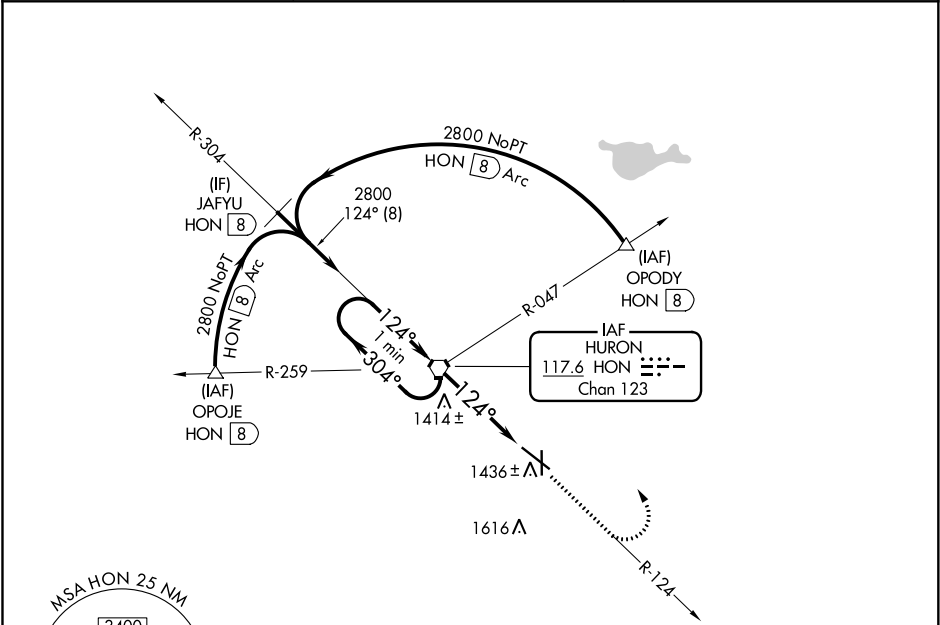
VOR RWY 12  
HURON RGNL (HON)

When local altimeter setting not received, use Mitchell Muni altimeter setting and increase all MDA 100 feet, increase S-12 Cat C visibility ¼ mile and Circling Cats C and D ½ mile. For inoperative MALSR increase S-12 Cat D visibility 1¼ mile. VDP NA when using Mitchell Muni altimeter setting. Circling Rwy 17, 35 NA at night.



MISSED APPROACH: Climb to 3000 via HON VORTAC R-124 then left turn direct HON VORTAC and hold.

ASOS 118.125	MINNEAPOLIS CENTER 126.25 339.8	UNICOM 123.0 (CTAF) 0
-----------------	------------------------------------	--------------------------



NC-1, 03 DEC 2020 to 31 DEC 2020

NC-1, 03 DEC 2020 to 31 DEC 2020