

WAAS CH <b>70314</b> <b>W12A</b>	APP CRS <b>121°</b>	Rwy Idg TDZE <b>1289</b> Apt Elev <b>1289</b>
--	------------------------	---

RNAV (GPS) RWY 12

HURON RGNL (HON)

RNP APCH.

▼

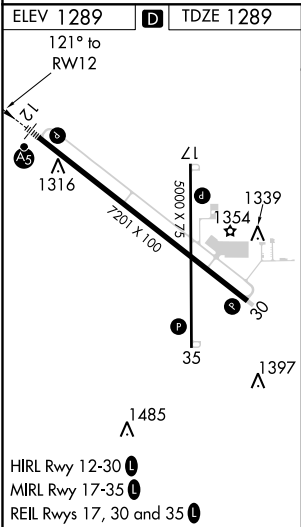
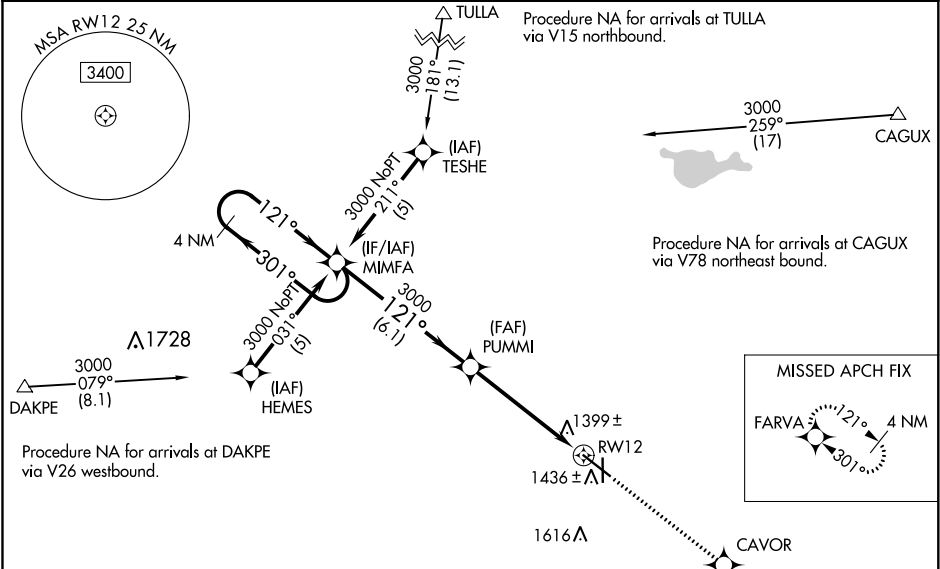
▲

For uncompensated Baro-VNAV systems, LNAV/VNAV NA below -17°C (2°F) or above 46°C (114°F). Baro-VNAV and VDP NA when using Mitchell Muni altimeter setting. When local altimeter setting not received, use Mitchell Muni altimeter setting and increase all DA 89 feet and all MDA 100 feet. Increase LNAV/VNAV all Cats, LNAV and Circling Cat C/D visibility ¼ mile. For inoperative MALSR when using Mitchell Muni altimeter setting increase LPV all Cats visibility to 1 mile. Circling Rwy 17, 35 NA at night.

MALSR

MISSED APPROACH:  
Climb to 3000 direct CAVOR and on track 121° to FARVA and hold.

ASOS <b>118.125</b>	MINNEAPOLIS CENTER <b>126.25 339.8</b>	UNICOM <b>123.0 (CTAF) 0</b>
------------------------	---	---------------------------------



4 NM Holding Pattern		MIMFA	PUMMI	3000	CAVOR	tr 121°	FARVA
3000 ← 301° 121° →		121° →		3000	*1.4 NM to RW12		*LNAV only
GP 3.00° TCH 50		6.1 NM		3.7 NM	1.4 NM		
CATEGORY	A	B	C	D			
LPV DA	1489-½ 200 (200-½)						
LNAV/ VNAV DA	1699-1 410 (500-1)					1699-1½ 410 (500-1½)	
LNAV MDA	1780-½ 491 (500-½)		1780-¾ 491 (500-¾)		1780-1 491 (500-1)		
CIRCLING	1820-1 531 (600-1)		1820-1½ 531 (600-1½)		1980-2¼ 691 (700-2¼)		