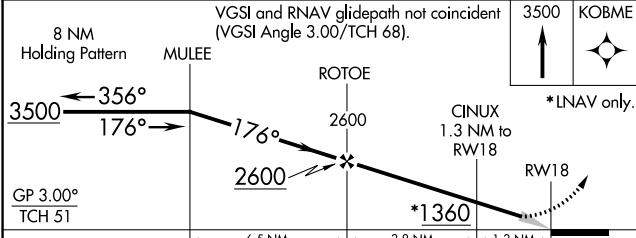
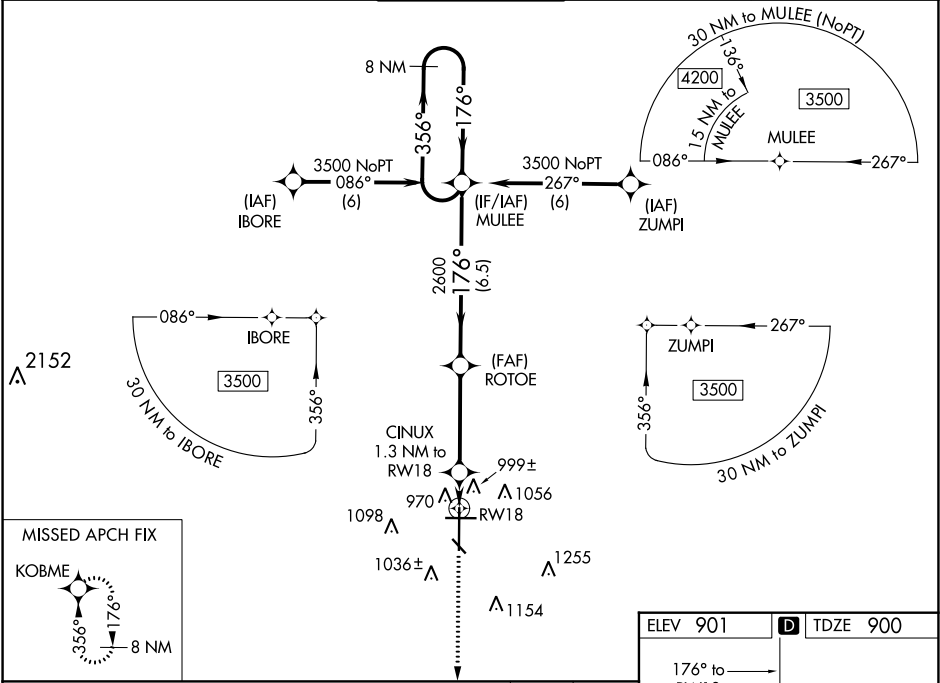


WAAS CH <b>40006</b> <b>W18A</b>	APP CRS <b>176°</b>	Rwy Idg TDZE Apt Elev	<b>9001</b> <b>900</b> <b>901</b>
--	------------------------	-----------------------------	---

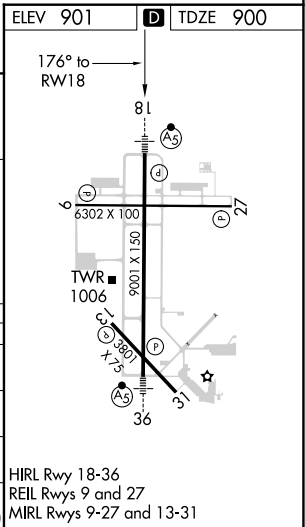
RNAV (GPS) RWY 18  
HECTOR INTL (FAR)

RNP APCH.	MALSR	MISSED APPROACH:
<p>For inoperative MALSR, increase LPV Cat E visibility to RVR 4000 and LNAV/VNAV Cat E and LNAV Cat D and E to RVR 6000. For uncompensated Baro-VNAV systems, LNAV/VNAV NA below -16°C (4°F) or above 47°C (116°F). #RVR 1800 authorized with use of FD or AP or HUD to DA.</p>		Climb to 3500 direct KOBME and hold.

ATIS <b>124.5 379.2</b>	FARGO APP CON <b>120.4 377.15</b>	FARGO TOWER <b>133.8 290.4</b>	GND CON <b>121.9 348.6</b>	CLNC DEL <b>121.9 348.6</b>
----------------------------	--------------------------------------	-----------------------------------	-------------------------------	--------------------------------



CATEGORY	A	B	C	D	E
LPV DA#	1100/24	200 (200-1/2)			
LNAV/VNAV DA	1272/40	372 (400-3/4)			
LNAV MDA	1260/24	360 (400-1/2)	1260/50	360 (400-1)	
CIRCLING	1380-1	479 (500-1)	1520-1 3/4 619 (700-1 3/4)	1620-2 1/4 719 (800-2 1/4)	1620-2 1/2 719 (700-2 1/2)



NC-1, 03 DEC 2020 to 31 DEC 2020

NC-1, 03 DEC 2020 to 31 DEC 2020