

WAAS CH <b>99643</b> <b>W15A</b>	APP CRS <b>140°</b>	Rwy Idg <b>7301</b> TDZE <b>2586</b> Apt Elev <b>2592</b>
--	------------------------	---

RNAV (GPS) RWY 15

DICKINSON-THEODORE ROOSEVELT RGNL (DIK)

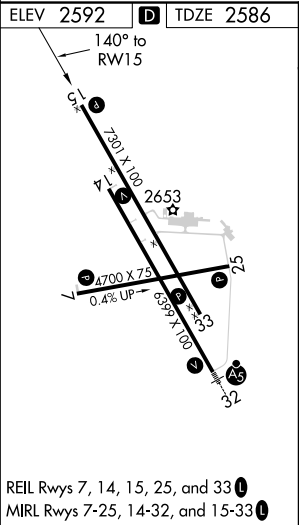
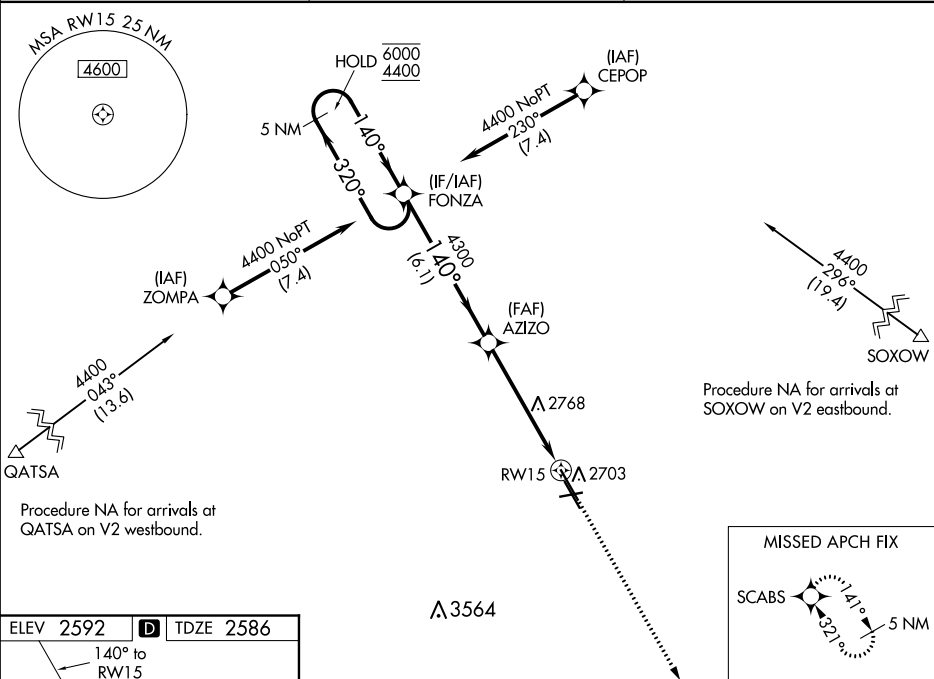
RNP APCH.

For uncompensated Baro-VNAV systems, LNAV/VNAV NA below -24°C or above 54°C.

-30°C

MISSED APPROACH: Climb to 5000 direct SCABS and hold.

ASOS <b>118.375</b>	MINNEAPOLIS CENTER <b>124.25 236.825</b>	UNICOM <b>123.0 (CTAF) 0</b>
------------------------	---	---------------------------------



VGSi and RNAV glidepath not coincident (VGSi Angle 3.00/TCH 43).				5000	SCABS
5 NM Holding Pattern					
6000 ← 320° 4400 ← 140°					
GP 3.00° TCH 52					
FONZA				AZIZO	
4300				4300	
6.1 NM				4 NM	1.2 NM
*1.2 NM to RWY 15					
RWY 15					
CATEGORY	A	B	C	D	
LPV DA	2786-1 200 (200-1)				
LNAV/VNAV DA	2836-1 250 (300-1)				
LNAV MDA	3020-1	434 (500-1)	3020-1¼	434 (500-1¼)	
<b>C</b> CIRCLING	3060-1	468 (500-1)	3120-1½ 528 (600-1½)	3200-2 608 (700-2)	