

WAAS CH <b>56599</b> <b>W31A</b>	APP CRS <b>311°</b>	Rwy Idg <b>8794</b> TDZE <b>1645</b> Apt Elev <b>1661</b>
--	------------------------	---

RNAV (GPS) RWY 31  
BISMARCK MUNI (BIS)

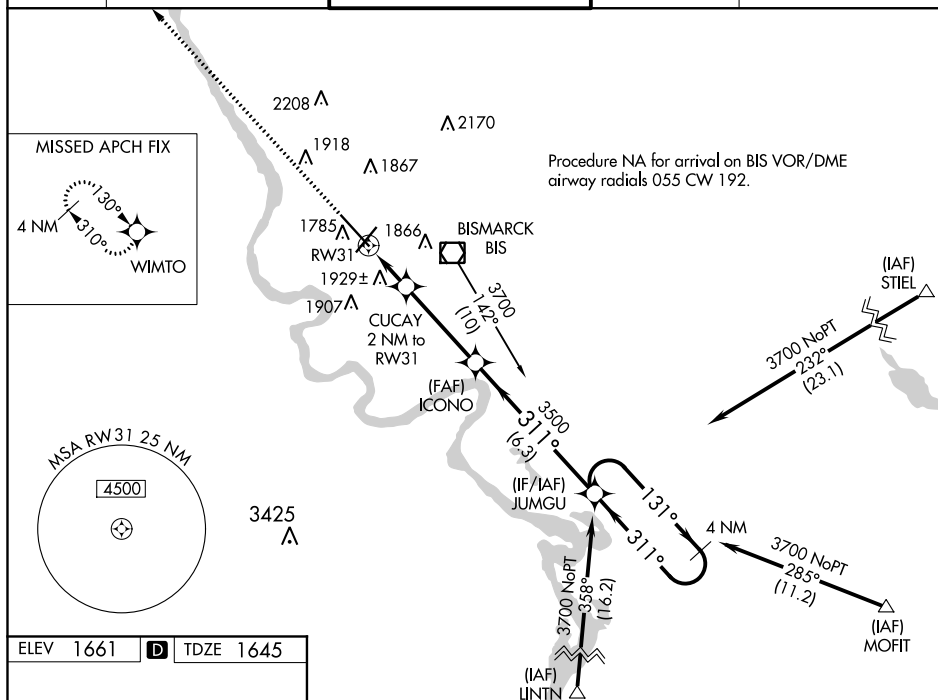
For uncompensated Baro-VNAV systems, LNAV/VNAV NA below -18°C (0°F) or above 33°C (91°F). DME/DME RNP-0.3 NA. \*\* RVR 1800 authorized with use of FD or AP or HUD to DA.

MALSR



MISSED APPROACH: Climb to 3800  
direct WIMTO and hold.

ATIS <b>119.35</b>	BISMARCK APP CON ★ <b>126.3 298.9</b>	BISMARCK TOWER ★ <b>118.3(CTAF) 0 257.8</b>	GND CON <b>121.9</b>	UNICOM <b>122.95</b>
-----------------------	--	--	-------------------------	-------------------------



REIL Rwy 3 and 21  
HIRL Rwy 3-21 and 13-31

CATEGORY	A	B	C	D
LPV DA	1845/24 200 (200-½)			
RNAV/VNAV DA	2269-1¾ 624 (700-1¾)			
RNAV MDA	2180/24 535 (600-½)	2180/55 535 (600-1)		
<b>C</b> CIRCLING	2200-1 539 (600-1)	2460-2¼ 799 (800-2¼)	2460-2½ 799 (800-2½)	

BISMARCK, NORTH DAKOTA

Amdt 1C 23APR20

46°46'N-100°45'W

BISMARCK MUNI (BIS)

RNAV (GPS) RWY 31