


WAAS CH 61007 W31A	APP CRS 315°	Rwy Idg 5099 TDZE 1423 Apt Elev 1424
--	------------------------	---

RNAV (GPS) RWY 31
CHANDLER FIELD (AXN)

 Inoperative table does not apply to LPV & LNAV/VNAV Cats A/B/C and LNAV Cat C. For uncompensated Baro-VNAV systems, LNAV/VNAV NA below -17°C (2°F) or above 46°C (114°F). DME/DME RNP -0.3 NA. VDP and Baro-VNAV NA when using Glenwood altimeter setting. When local altimeter setting not received, use Glenwood altimeter setting and increase all DAs/MDAs 40 feet and increase LPV and LNAV/VNAV visibilities ¼ mile all Cats.

ODALS



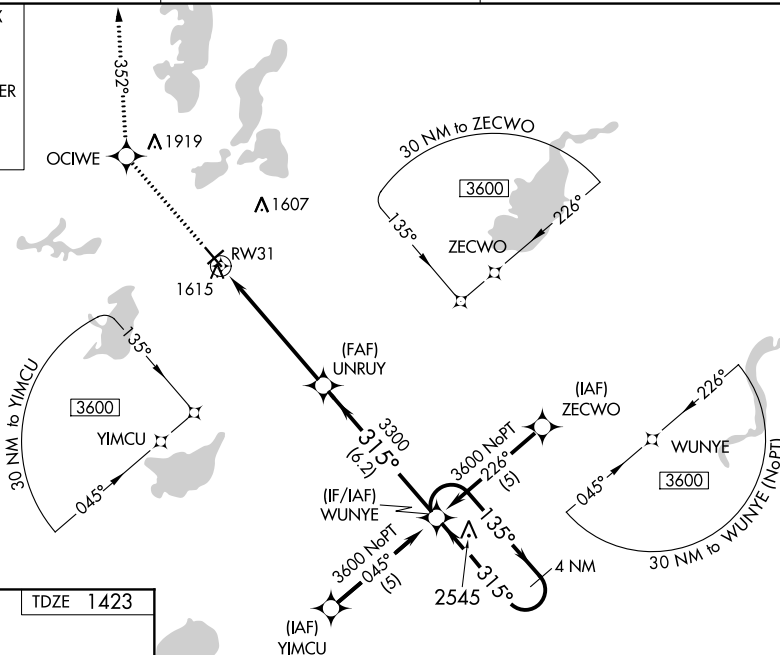
MISSED APPROACH: Climb to 3500 direct
OCIWE and via 352° track to TILER and
hold.

ASOS
118.375

MINNEAPOLIS CENTER
126.1 269.2

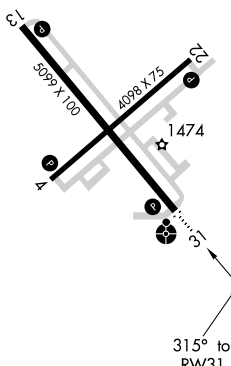
UNICOM
123.0 (CTAF) **L**

MISSED APCH FIX



ELEV 1424

TDZE 1



REIL Rwys 4, 13 and 22 **L**
MIRL Rwys 4-22 and 13-31 **L**

