

WAAS CH 77729 W30A	APP CRS 295°	Rwy Idg 3899 TDZE 810 Apt Elev 813
--	------------------------	---

RNAV (GPS) RWY 30

SHAWANO MUNI (EVS)

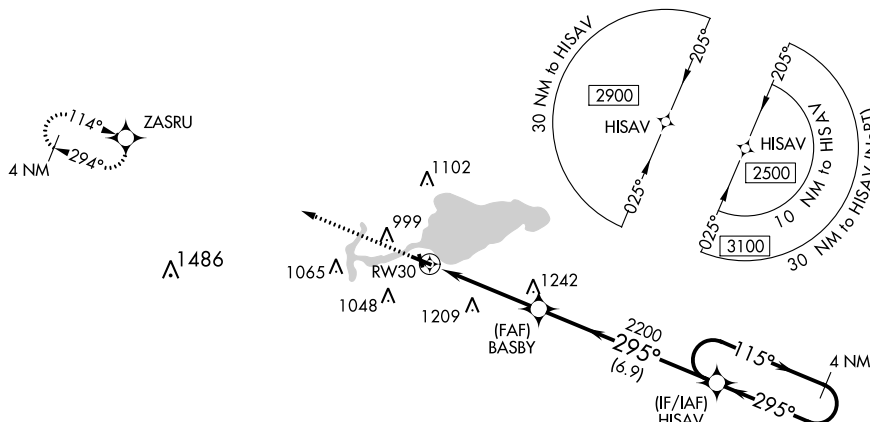
T Baro-VNAV and VDP NA when using Green Bay altimeter setting. Helicopter visibility reduction below ¾ SM NA. For uncompensated Baro-VNAV systems, LNAV/VNAV NA below -16°C (4°F) or above 39°C (102°F). DME/DME RNP-0.3 NA. Circling to Rwy 12 and 35 NA at night. When local altimeter setting not received, use Green Bay altimeter setting and increase all DA 77 feet and all MDA 80 feet and increase LPV all Cats, LNAV/VNAV all Cats, LNAV Cat B, and Circling Cats B and D visibility ¼ mile, increase LNAV Cat C and D and Circling Cat C visibility ½ mile.

MISSED APPROACH:
Climb to 2700 direct
ZASRU and hold.

AWOS-3
118.65

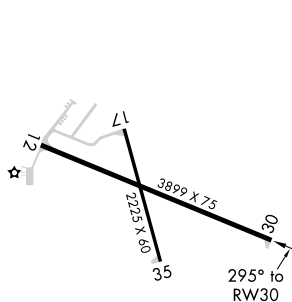
GREEN BAY APP CON ★
119.4 338.2

UNICOM
122.8 (CTAF) **L**

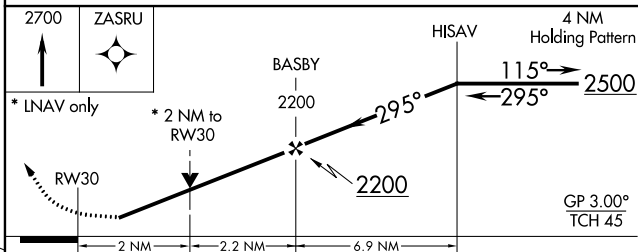


ELEV 813

TDZE 810



WATER ALL-WAY:
12000 X 1000



CATEGORY	A	B	C	D
LPV DA	1097-1 287 (300-1)			
LNAV/VNAV DA	1456-2¼ 646 (700-2¼)			
LNAV MDA	1500-1 690 (700-1)		1500-2 690 (700-2)	
CIRCLING	1500-1 687 (700-1)		1500-2 687 (700-2)	1560-2½ 747 (800-2½)