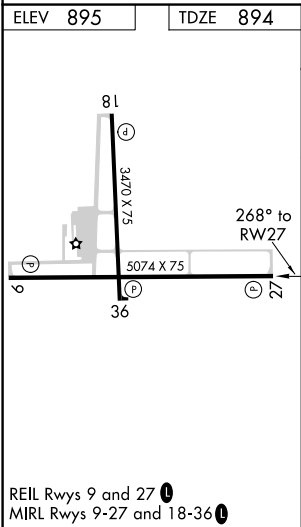
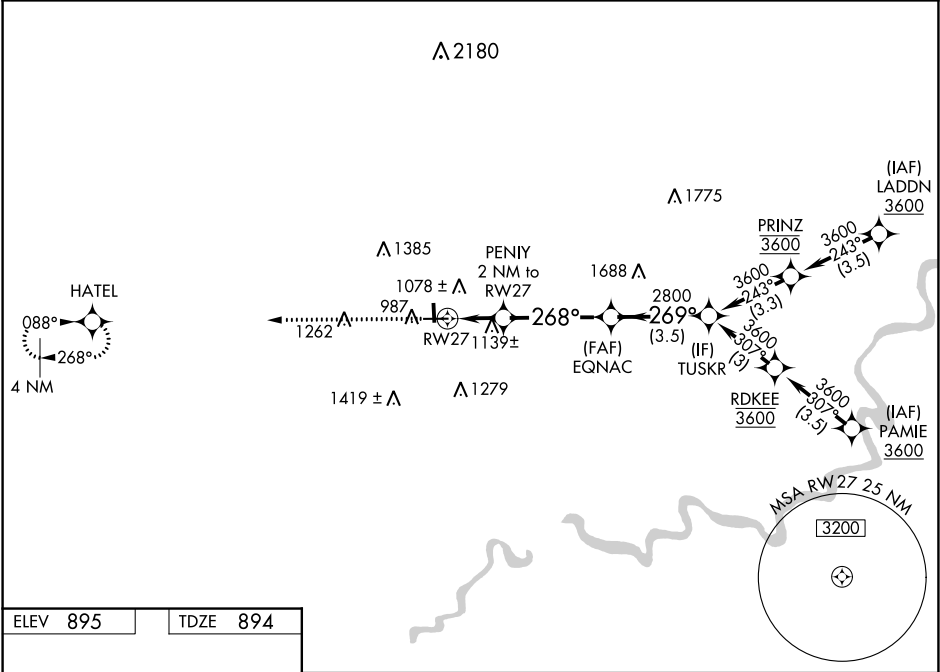


WAAS CH 97604 W27A	APP CRS 268°	Rwy Idg TDZE 894 Apt Elev 895	5074
--	------------------------	---	-------------

RNAV (GPS) RWY 27

MENOMONIE MUNI-Score Field (LUM)

RNP APCH.		MISSED APPROACH: Climb to 2800 direct HATEL and hold.
Circling Rwy 18, 36 NA at night. For uncompensated Baro-VNAV systems, LNAV/VNAV NA below -16°C or above 54°C.		
AWOS-3 118.025	MINNEAPOLIS CENTER 125.3 335.6	UNICOM 122.7 (CTAF) 0



2800 HATEL		PENNY 2 NM to RWY 27		EQNAC 2800		TUSKR 3600	
*LNAV only		*1.5 NM to RWY 27		268°		269°	
RWY 27		*1560		2800		GP 3.00° TCH 45	
1.5 NM		0.5		3.9 NM		3.5 NM	
CATEGORY	A	B		C		D	
LPV DA	1144-3/4		250 (300-3/4)		NA		NA
LNAV/VNAV DA	1470-15/8		576 (600-15/8)		NA		NA
LNAV MDA	1400-1		506 (600-1)		1400-13/8		NA
CIRCLING		1420-1		1800-11/4		1820-23/4	
		525 (600-1)		905 (1000-11/4)		925 (1000-23/4)	