

WAAS CH <b>56318</b> <b>W29A</b>	APP CRS <b>292°</b>	Rwy Idg TDZE Apt Elev	<b>4265</b> <b>831</b> <b>838</b>
--	------------------------	-----------------------------	---

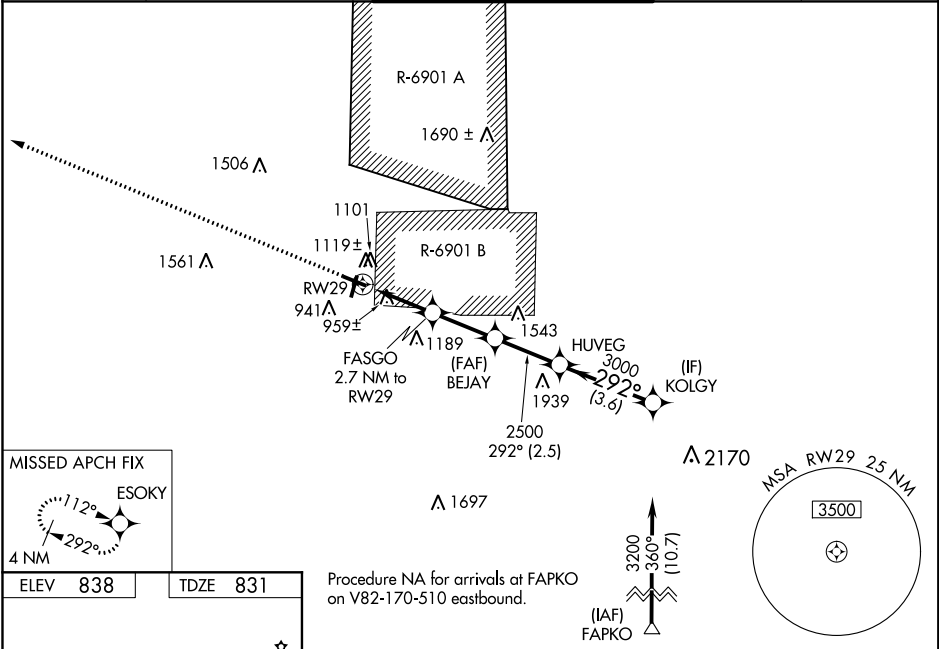
RNAV (GPS) RWY 29  
SPARTA/FORT MC COY (CMY)

**⚠** Circling to Rwy 19 NA at night. For uncompensated Baro-VNAV systems, LNAV/VNAV NA below -16°C (4°F) or above 38°C (100°F). DME/DME RNP-0.3 NA. Helicopter visibility reduction below 1 SM not authorized. Baro-VNAV and VDP NA when using La Crosse altimeter setting. When local altimeter setting not received, use La Crosse altimeter setting and increase all DA 79 feet and all MDA 80 feet; increase LPV all Cats visibility 3/8 mile, and LNAV/VNAV all Cats and LNAV and Circling Cats C/D visibility 1/4 mile. Procedure not authorized when R-6901B is active.

**MISSED APPROACH:**  
Climb to 4000 direct  
ESOKY and hold.

**❄** -33°C

AWOS-3 <b>119.775</b>	VOLK APP CON ★ <b>135.25 244.875</b>	SPARTA/MC COY TOWER ★ <b>124.6 241.0</b>	GND CON <b>123.1</b>	CTAF <b>124.6</b>
--------------------------	---	---	-------------------------	----------------------



**4000 ESOKY**

VGSI and RNAV glidepath not coincident (VGSI Angle 3.00/TCH 43).

**\*LNAV only**

FASGO 2.7 NM to RWY 29

BEJAY 2500

HUVEG 3000

KOLGY 3200

GP 3.00° TCH 40

292°

1.5 NM 1.2 NM 2.4 NM 2.5 NM 3.6 NM

CATEGORY	A	B	C	D
LPV DA	1107-7/8		276 (300-7/8)	
LNAV/VNAV DA	1263-1 1/2		432 (500-1 1/2)	
LNAV MDA	1320-1 489 (500-1)		1320-1 3/8 489 (500-1 3/8)	
CIRCLING	1520-1 682 (700-1)	1540-1 702 (800-1)	1580-2 1/4 742 (800-2 1/4)	1620-2 1/2 782 (800-2 1/2)

REIL Rwy 11 and 29

MIRL Rwy 1-19 and 11-29

EC-3, 03 DEC 2020 to 31 DEC 2020

EC-3, 03 DEC 2020 to 31 DEC 2020