

| | | |
|--|------------------------|---|
| WAAS CH 65721 W11A | APP CRS 112° | Rwy Idg TDZE 829 Apt Elev 838 |
|--|------------------------|---|

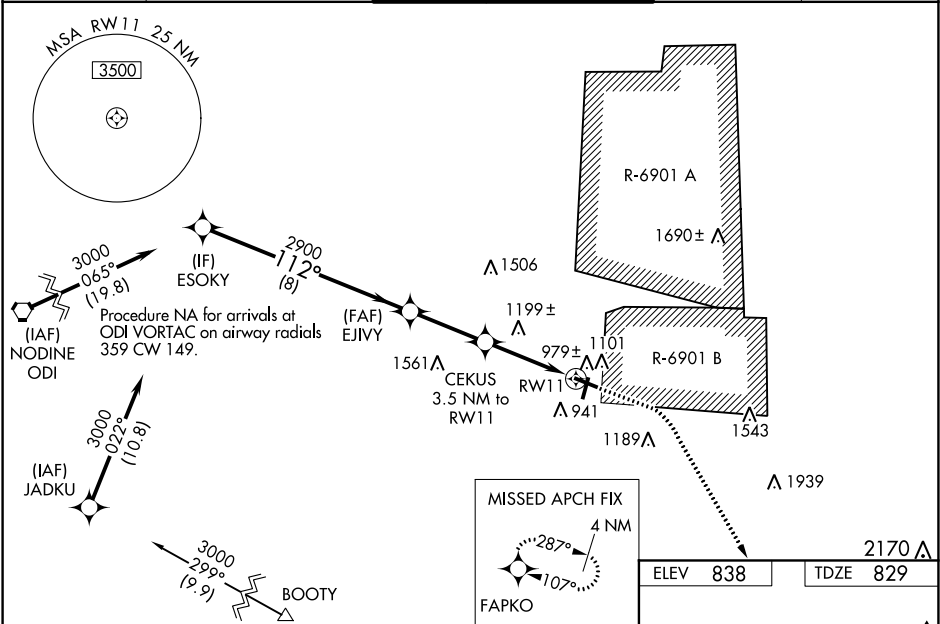
RNAV (GPS) RWY 11
SPARTA/FORT MC COY (CMY)

⚠ Circling to Rwy 19 NA at night. Baro-VNAV NA when using La Crosse altimeter setting. For uncompensated Baro-VNAV systems, LNAV/VNAV NA below -16°C (4°F) or above 38°C (100°F). DME/DME RNP-0.3 NA. Visibility reduction by helicopters NA. VDP NA with La Crosse altimeter setting. When local altimeter setting not received, use La Crosse altimeter setting and increase all DA 79 feet and all MDA 80 feet; increase LPV and LNAV/VNAV all Cats and LNAV and Circling Cats C/D visibility ¼ mile. Procedure not authorized when R-6901B active.

❄ -33°C

MISSED APPROACH:
Climb to 1700 then climbing right turn to 4000 direct FAPKO and hold.

| | | | | |
|--------------------------|---|---|-------------------------|-------------------------------|
| AWOS-3 119.775 | VOLK APP CON ★ 135.25 244.875 | SPARTA/MC COY TOWER ★ 124.6 241.0 | GND CON 123.1 | CTAF 124.6 📶 |
|--------------------------|---|---|-------------------------|-------------------------------|



| | | | | | | | |
|--------------|--|--------------------|--|----------------------------|--|---------------------------------|--|
| ESOKY | | EJIVY | | CEKUS | | RWY 11 | |
| 3000 | | 2900 | | 3.5 NM to RWY 11 | | 1.9 NM to RWY 11 | |
| GP 3.00° | | 112° | | *1960 | | *LNAV only | |
| TCH 40 | | 2900 | | 8 NM | | 2.9 NM | |
| CATEGORY | | A | | B | | C | |
| LPV DA | | 1079-7/8 | | 250 (300-7/8) | | | |
| LNAV/VNAV DA | | 1190-1 1/4 | | 361 (400-1 1/4) | | | |
| LNAV MDA | | 1460-1 631 (700-1) | | 1460-1 3/4 631 (700-1 3/4) | | | |
| CIRCLING | | 1520-1 682 (700-1) | | 1540-1 702 (800-1) | | 1580-2 1/4 742 (800-2 1/4) | |
| | | | | | | 1620-2 1/2 782 (800-2 1/2) | |
| | | | | | | REIL Rwy 11 and 29 📶 | |
| | | | | | | MRL Rwy 1-19 and 11-29 📶 | |

EC-3, 03 DEC 2020 to 31 DEC 2020

EC-3, 03 DEC 2020 to 31 DEC 2020