

NDB	CMY	APP CRS	Rwy Idg	4265
412		287°	TDZE	831
			Apt Elev	838

NDB RWY 29

SPARTA/FORT MC COY (CMY)

⚠

⚠

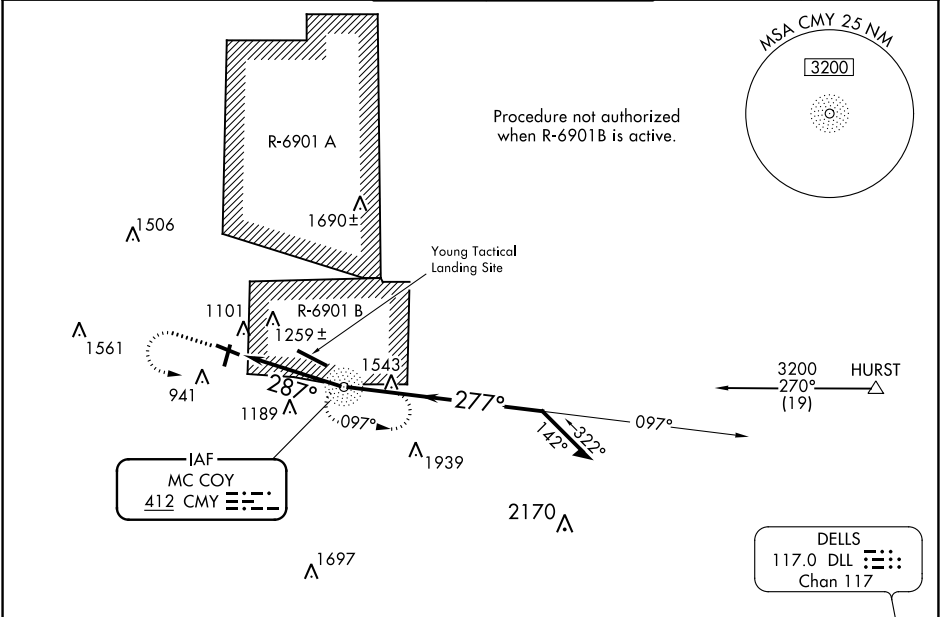
❄

-33°C

Circling to Rwy 19 NA at night. When local altimeter setting not received, use La Crosse altimeter setting and increase all MDA 80 feet and visibility S-29 Cat B ¼ mile and Cat C ½ mile, Circling Cat B and C ¼ mile. Helicopter visibility reduction below 1 SM not authorized.

MISSED APPROACH: Climb to 2100 then climbing left turn to 3200 direct CMY NDB and hold.

AWOS-3 119.775	VOLK APP CON ★ 135.25 244.875	SPARTA/MC COY TOWER ★ 124.6 241.0	GND CON 123.1	CTAF 124.6 0
-------------------	----------------------------------	--------------------------------------	------------------	-----------------



ELEV 838

TDZE 831

Diagram showing the intersection of Runway 29 and Runway 11. Runway 29 is 4697 x 100 feet wide. Runway 11 is 2920 feet wide. Taxiway 61 is 100 feet wide. The diagram also shows the location of Tower (TWR) 912 and the 287° 4.1 NM from FAF point.

REIL Rwy 11 and 29

MIRL Rwy 1-19 and 11-29

FAF to MAP 4.1 NM

Knots	60	90	120	150	180
Min:Sec	4:06	2:44	2:03	1:38	1:22

2100

3200

CMY

CMY NDB

Remain within 10 NM

VGSI and descent angles not coincident (VGSI Angle 3.00/TCH 43).

3.56° TCH 40

287°

2400

277°

3200

097°

CATEGORY	A	B	C	D
S-29	1560-1	729 (800-1)	1560-2 729 (800-2)	NA
CIRCLING	1560-1	722 (800-1)	1580-2¼ 742 (800-2¼)	NA