

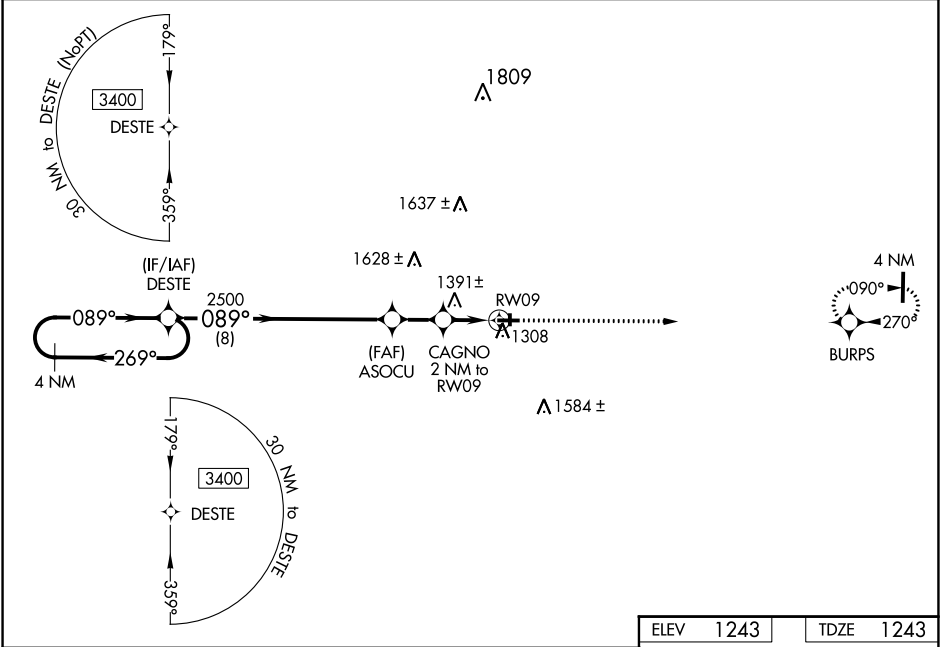
WAAS CH 49138 W09A	APP CRS 089°	Rwy Idg TDZE 1243 Apt Elev 1243
--	------------------------	---

RNAV (GPS) RWY 9
CUMBERLAND MUNI (UBE)

V Baro-VNAV NA when using Rice Lake altimeter setting. For uncompensated Baro-VNAV systems, LNAV/VNAV NA below -17°C (2°F) or above 54°C (130°F). DME/DME RNP-0.3 NA. Helicopter visibility reduction below ¾ SM NA. VDP NA when using Rice Lake altimeter setting. When local altimeter setting not received, use Rice Lake altimeter setting; increase LPV DA to 1536 feet and LNAV/VNAV DA to 1562 feet and all MDA 60 feet; increase LNAV/VNAV all Cats visibility ¼ mile and increase LNAV Cat C/D visibility and Circling Cat C/D visibility ¼ mile.

MISSED APPROACH:
Climb to 3400 direct BURPS and hold.

AWOS-3PT 119.175	MINNEAPOLIS CENTER 125.3 335.6	GCO 121.725	UNICOM 122.8 (CTAF) 0
----------------------------	--	-----------------------	---------------------------------



ELEV 1243		TDZE 1243	
4 NM Holding Pattern DESTE		VGSI and RNAV glidepath not coincident (VGSI Angle 3.00/TCH 26).	
3400 269° 089° 089°		ASOCU 2500 CAGNO 2 NM to RW09 *1.2 NM to RW09 RW09	
GP 3.00° TCH 40		3400 BURPS *LNAV only	
8 NM 1.8 NM 0.8 1.2		089° to RW09 8 L 120 196 36 27	
CATEGORY	A	B	1.9 NM C
LPV DA	1493-1		250 (300-1)
LNAV/VNAV DA	1519-1		276 (300-1)
LNAV MDA	1660-1	417 (500-1)	1660-1½ 417 (500-1½)
CIRCLING	1660-1 417 (500-1)	1940-1 697 (700-1)	1940-2 697 (700-2) 1980-2¼ 737 (800-2¼)
REIL Rwy 27 0		MIRL Rwy 9-27 0	