

WAAS CH 77732 W18A	APP CRS 177°	Rwy Idg 4000 TDZE 1080 Apt Elev 1088
--	------------------------	---

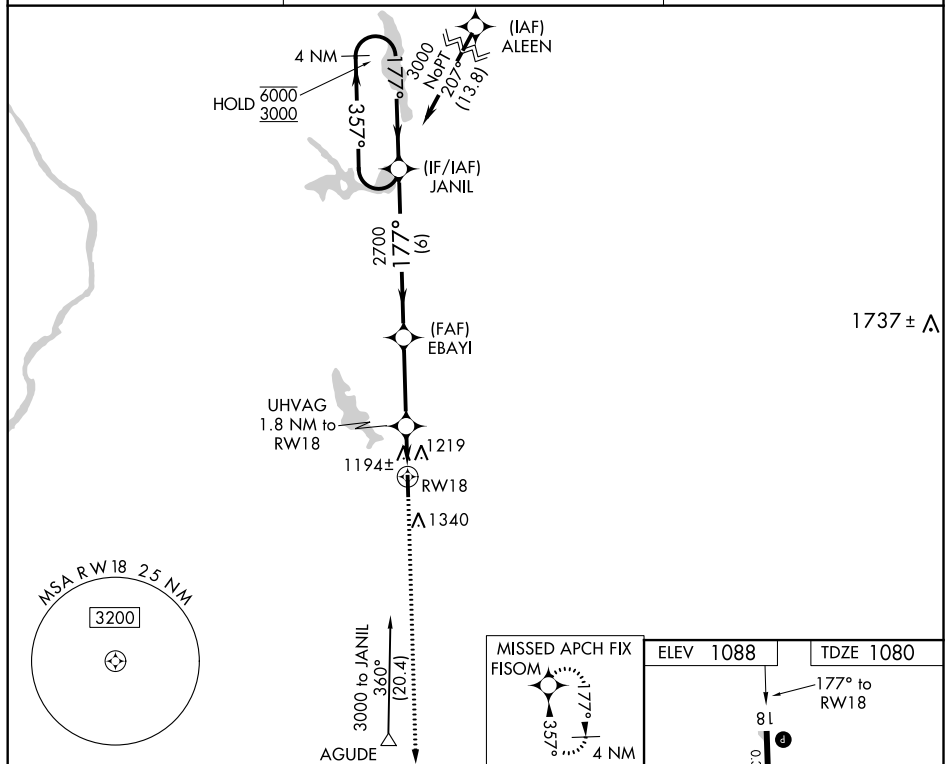
RNAV (GPS) RWY 18
AMERY MUNI (AHH)

RNP APCH.

NA Rwy 18 helicopter visibility reduction below $\frac{3}{4}$ SM NA. Use New Richmond altimeter setting; when not received, use Osceola altimeter setting and increase all MDAs 20 feet and Circling Cat C visibility $\frac{1}{4}$ SM.

MISSED APPROACH:
Climb to 3000 direct
FISOM and hold.

RNH AWOS-3 120.0	MINNEAPOLIS CENTER 125.3 335.6	UNICOM 122.8 (CTAF) 0
----------------------------	--	---------------------------------



4 NM Holding Pattern

Visual Segment - Obstacles.

3000 FISOM

JANIL

EBAYI

UHVAG 1.8 NM to RW18

6000 ← 357°

3000 → 177°

177°

2700

1680

6 NM

3.2 NM

1.8

CATEGORY	A	B	C	D
LP MDA	1500-1 420 (500-1)	1500-1¼ 420 (500-1¼)	NA	
LNAV MDA	1600-1 520 (600-1)	1600-1½ 520 (600-1½)	NA	
CIRCLING	1740-1 652 (700-1)	1740-1¼ 652 (700-1¼)	NA	

AMERY, WISCONSIN
Amdt 1B 05DEC19

45°17'N-92°23'W

AMERY MUNI (AHH)
RNAV (GPS) RWY 18

MIRL Rwy 18-36 **L**
REIL Rwy 18 and 36 **L**