

WAAS CH 77921 W14A	APP CRS 140°	Rwy Idg TDZE 1237 Apt Elev 1240	4001
--	------------------------	---	-------------

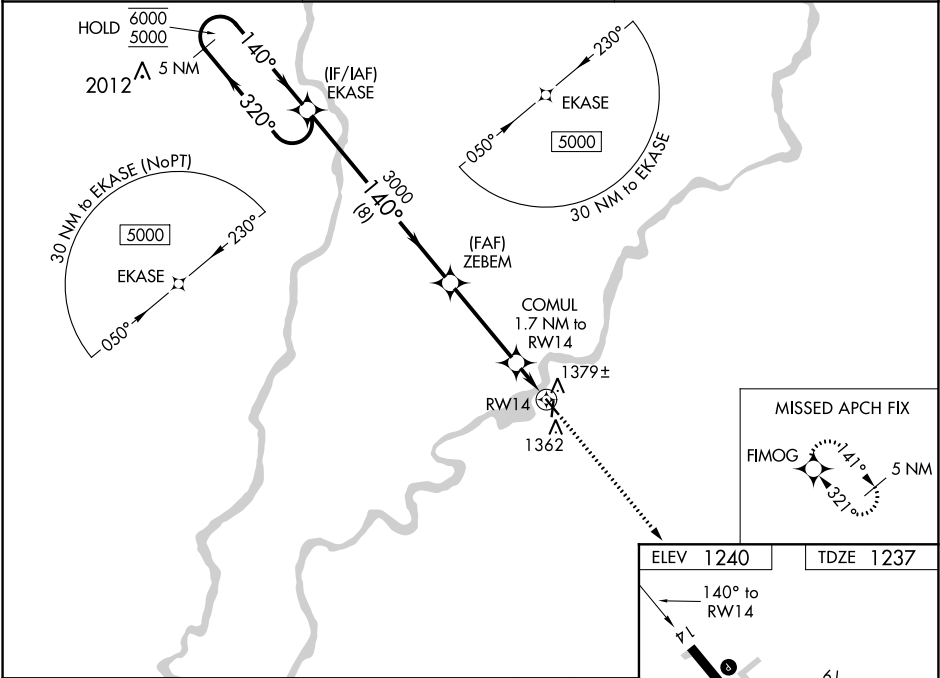
RNAV (GPS) RWY 14
RUSK COUNTY (RCX)

RNP APCH.

⚠ Rwy 14 helicopter visibility reduction below 1 SM NA. Straight-in Rwy 14 NA at night, Circling Rwy 1, 14, 19 NA at night. When local altimeter setting not received, use Rice Lake altimeter setting and increase all MDAs 100 feet.

MISSED APPROACH: Climb to 5000 direct FIMOG and hold, continue climb-in-hold to 5000.

AWOS-3 118.125	MINNEAPOLIS CENTER 133.65 281.5	UNICOM 122.8 (CTAF) 0
--------------------------	---	---------------------------------



5 NM Holding Pattern

VGSI and descent angles not coincident (VGSI Angle 3.00/TCH 29).

5000 FIMOG

6000 ← 320°

5000 → 140°

3000

1820

8 NM

3.7 NM

1.7 NM

CATEGORY	A	B	C	D
INAV MDA	1640-1	403 (400-1)	NA	
CIRCLING	1680-1 440 (500-1)	1700-1 460 (500-1)	NA	

ELEV 1240

TDZE 1237

140° to RWY 14

4001 X 75

3199 X 75

0.5% UP

61

32

REIL Rwy 14 and 32 0

MIRL Rwy 14-32 and 1-19 0

EC-3, 03 DEC 2020 to 31 DEC 2020

EC-3, 03 DEC 2020 to 31 DEC 2020