

WAAS CH 86525 W32A	APP CRS 321°	Rwy Idg TDZE 996 Apt Elev 998
--	------------------------	---

RNAV (GPS) RWY 32

NEW RICHMOND RGNL (R.NH)

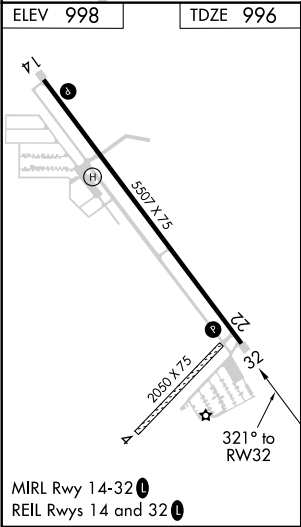
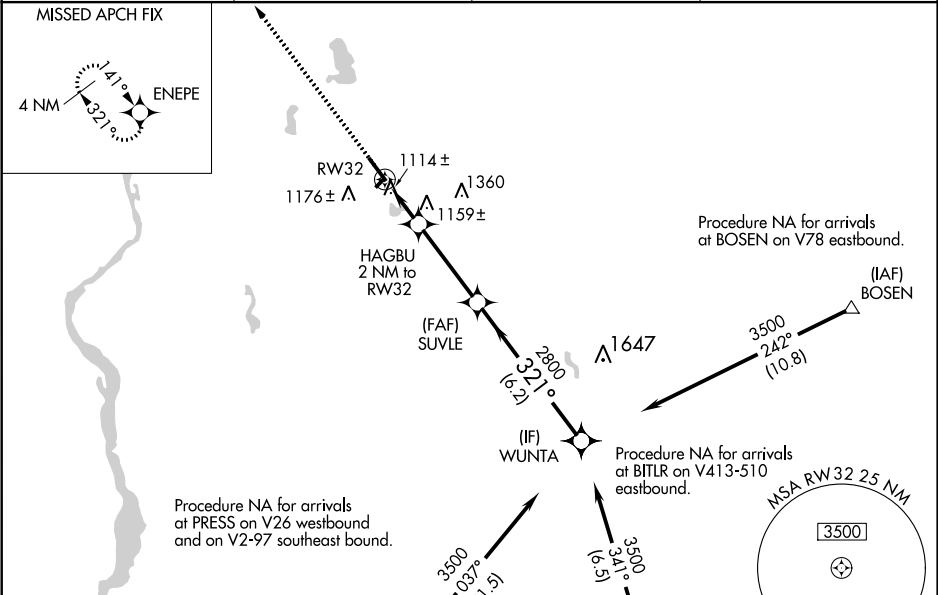
RNP APCH.

⚠

Baro-VNAV NA when using Osceola altimeter setting. For uncompensated Baro-VNAV systems, LNAV/VNAV NA below -16°C (4°F) or above 37°C (98°F). Rwy 32 helicopter visibility reduction below ¾ SM NA. When local altimeter setting not received, use Osceola altimeter setting and increase all DA/MDA 40 feet; increase LNAV visibility Cats C and D ½ SM and Circling Cats C and D ¼ SM. Circling to Rwy 4, 22 NA.

MISSED APPROACH:
Climb to 3500 direct ENEPE and hold.

AWOS-3 120.0	MINNEAPOLIS APP CON 121.2 335.65	GCO 121.725	UNICOM 122.975 (CTAF) 0
------------------------	--	-----------------------	-----------------------------------



3500 ENEPE

VGSI and RNAV glidepath not coincident (VGSI Angle 3.00°/TCH 20).

*LNAV only.

HAGBU 2 NM to RW32

RW32

SUVLE 2800

WUNTA 3500

321°

2800

1680

2 NM

3.5 NM

6.2 NM

GP 3.00° TCH 50

CATEGORY	A	B	C	D
LPV DA		1246-1	250 (300-1)	
LNAV/VNAV DA		1295-1	299 (300-1)	
LNAV MDA	1420-1	424 (500-1)	1420-1¼	424 (500-1¼)
CIRCLING	1540-1	542 (600-1)	1660-1¾ 662 (700-1¾)	1660-2 662 (700-2)