

WAAS CH 82428 W03A	APP CRS 031°	Rwy Idg 5003 TDZE 473 Apt Elev 473
--	------------------------	---

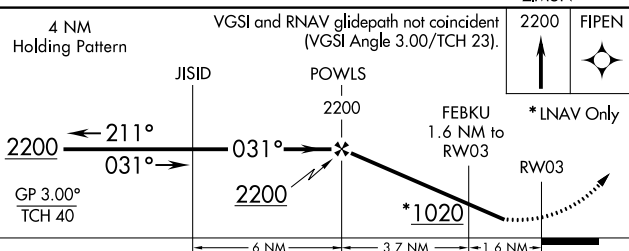
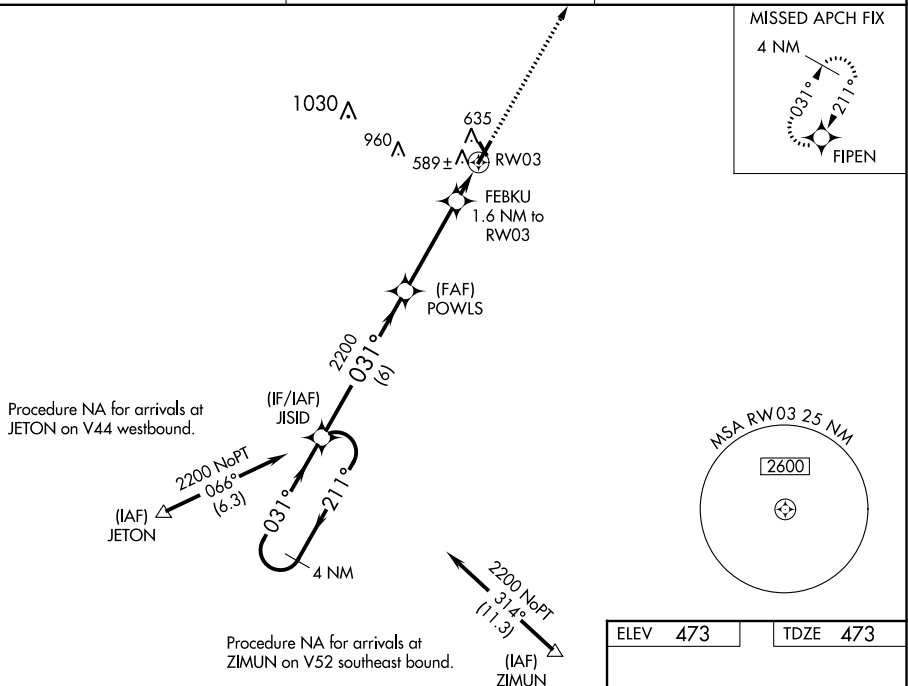
RNAV (GPS) RWY 3
FLORA MUNI (FOA)

RNP APCH.

▼ Baro-VNAV NA when using Olney-Noble altimeter setting. For uncompensated Baro-VNAV systems, LNAV/VNAV NA below -17°C or above 54°C. When local altimeter setting not received, use Olney-Noble altimeter setting and increase all DA 33 feet and all MDA 40 feet; increase LPV visibility all Cats, and LNAV Cat C visibility $\frac{1}{8}$ mile, Circling Cat C visibility $\frac{1}{4}$ mile.
▲ Rwy 3 helicopter visibility reduction below $\frac{3}{4}$ SM NA. Circling NA to Rwys 15 and 33.

MISSED APPROACH:
Climb to 2200 direct
FIPEN and hold.

AWOS-3 120.175	KANSAS CITY CENTER 127.7 351.825	UNICOM 122.7 (CTAF) 0
--------------------------	--	---------------------------------



CATEGORY	A	B	C	D
LPV DA	783-1	310 (400-1)		NA
RNAV/ VNAV	859-1 $\frac{3}{8}$	386 (400-1 $\frac{3}{8}$)		NA
RNAV MDA	860-1	387 (400-1)	860-1 $\frac{1}{8}$ 387 (400-1 $\frac{1}{8}$)	NA
CIRCLING	940-1	467 (500-1)	1120-1 $\frac{3}{4}$ 647 (700-1 $\frac{3}{4}$)	NA

