

APP CRS
277°

Rwy Idg
TDZE
Apt Elev

3400
1237
1238

RNAV (GPS) RWY 28

NEILLSVILLE MUNI(VIQ)

RNP APCH.

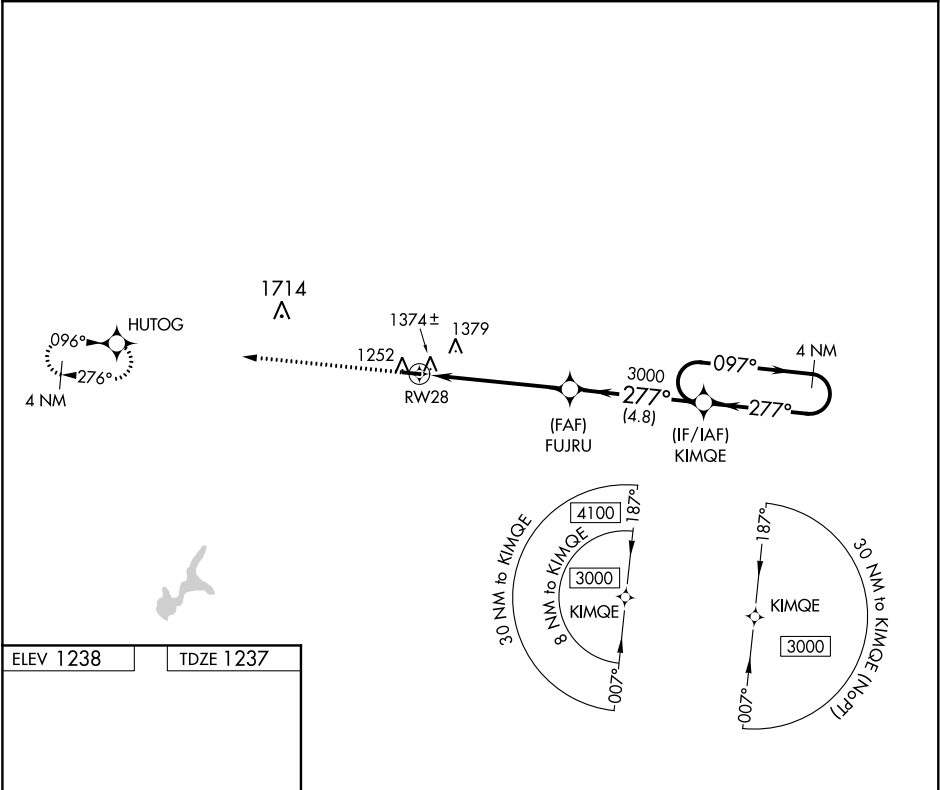
▼

NA

Rwy 28 helicopter visibility reduction below ¾ SM NA. Use Marshfield altimeter setting; when not received, use Wisconsin Rapids altimeter setting and increase all MDA 80 feet.

MISSED APPROACH:
Climb to 3000 direct HUTOG and hold.

MFI ASOS 121.575	MINNEAPOLIS CENTER 124.4 317.7	UNICOM 122.8 (CTAF) 0
---------------------	-----------------------------------	--------------------------



ELEV 1238

TDZE 1237

3000

HUTOG

Visual Segment - Obstacles.

4 NM Holding Pattern

RW28

FUJRU

KIMQE

3000

277°

097°

3000

277°

5.4 NM

4.8 NM

CATEGORY	A	B	C	D
LNAV MDA	1680-1	443 (500-1)	NA	NA
CIRCLING	1720-1	482 (500-1)	NA	NA