

WAAS CH 90131 W10A	APP CRS 097°	Rwy Idg TDZE 1236 Apt Elev 1238
--	------------------------	---

RNAV (GPS) RWY 10

NEILLSVILLE MUNI (VIQ)

▼

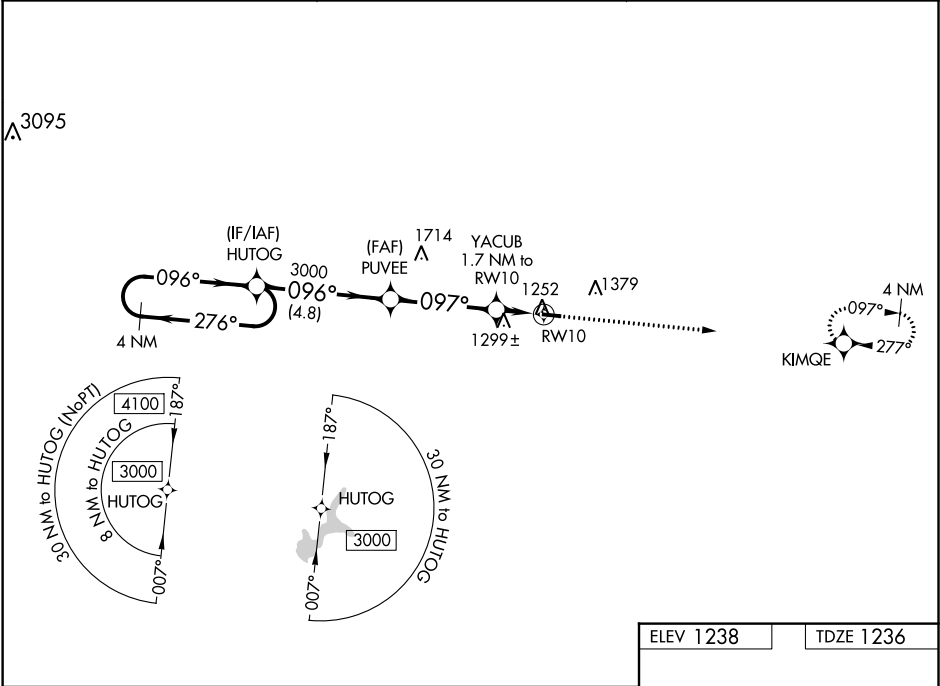
Baro-VNAV NA. DME/DME RNP-0.3 NA. Helicopter visibility reduction below ¾ SM NA. Use Marshfield altimeter setting; when not received, use Wisconsin Rapids altimeter setting and increase all DA 63 feet and all MDA 80 feet. Increase LPV and LNAV/VNAV Cats A/B visibility ¼ mile.

⚠

NA

MISSED APPROACH: Climb to 3000 direct KIMQE and hold.

MFI ASOS 121.575	MINNEAPOLIS CENTER 124.4 317.7	UNICOM 122.8 (CTAF) 0
----------------------------	--	---------------------------------



4 NM Holding Pattern

VGSI and RNAV glidepath not coincident (VGSI Angle 3.00/TCH 32).

3000 KIMQE

HUTOG PUVEE YACUB 1.7 NM to RW10 *LNAV only

3000 096° 096° 097° 097° to RW10

GP 3.00° TCH 40 *1780 RW10

4.8 NM 3.8 NM 1.7 NM

CATEGORY	A	B	C	D
LPV DA	1526-1	290 (300-1)	NA	
LNAV/ VNAV DA	1526-1	290 (300-1)	NA	
LNAV MDA	1600-1	364 (400-1)	NA	
CIRCLING	1720-1	482 (500-1)	NA	

