


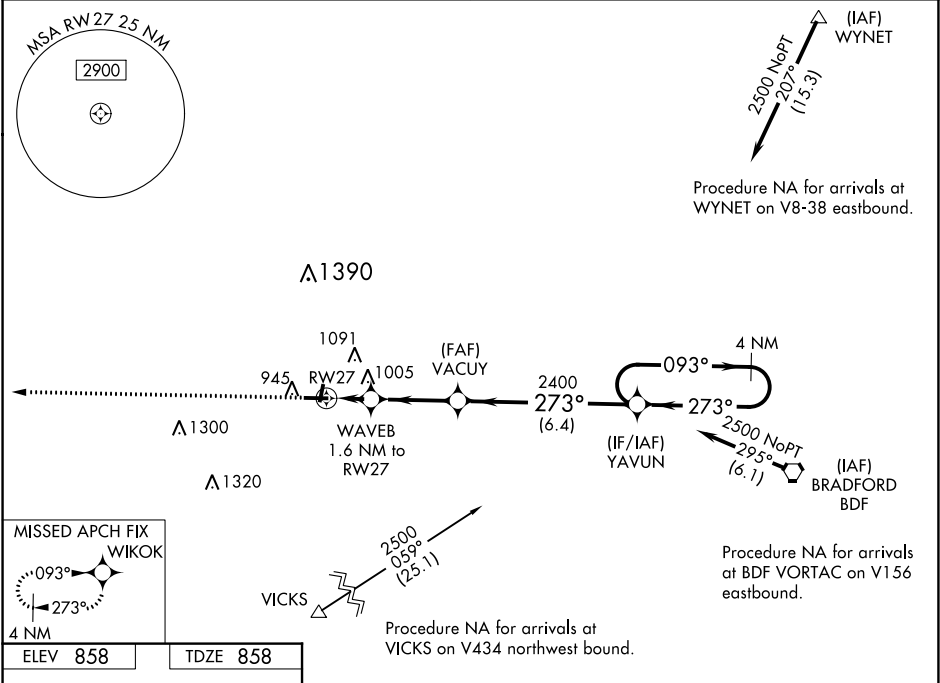


WAAS CH <b>56433</b> <b>W27A</b>	APP CRS <b>273°</b>	Rwy Idg TDZE <b>858</b> Apt Elev <b>858</b>
--	------------------------	---


RNAV (GPS) RWY 27  
KEWANEE MUNI (EZI)

  NA	Baro-VNAV NA. DME/DME RNP-0.3 NA. Use Galesburg altimeter setting; when not received, use Moline altimeter setting and increase all DA 29 feet and all MDA 40 feet, increase LPV all Cats and LNAV Cat C visibility 1/8 mile, and Circling Cat C visibility 1/4 mile.	MISSED APPROACH: Climb to 2400 direct WIKOK and hold.
---	---	--

QUAD CITY APP CON ★ <b>133.275 257.8</b>	UNICOM <b>122.8</b> (CTAF) 
---	---



MIRL Rwy 1-19 and 9-27

CATEGORY	A	B	C	D
LPV DA	1183-1 325 (400-1 1/8)			NA
LNAV/VNAV DA	1212-1 354 (400-1 1/4)			NA
LNAV MDA	1340-1	482 (500-1)	1340-1 482 (500-1 3/8)	NA
 CIRCLING	1340-1 482 (500-1)	1520-1 662 (700-1)	1520-1 3/4 662 (700-1 3/4)	NA

EC-3, 03 DEC 2020 to 31 DEC 2020

EC-3, 03 DEC 2020 to 31 DEC 2020