

VORTAC TTH	APP CRS	Rwy Idg	N/A
115.3	301°	TDZE	N/A
Chan 100		Apt Elev	654

VOR/DME-A

EDGAR COUNTY (PRG)

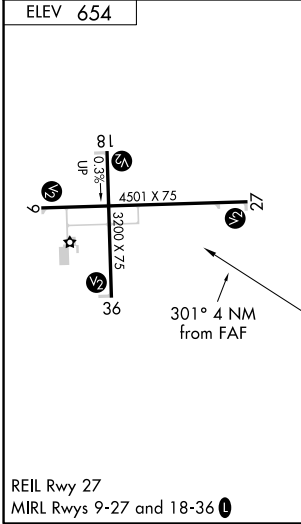
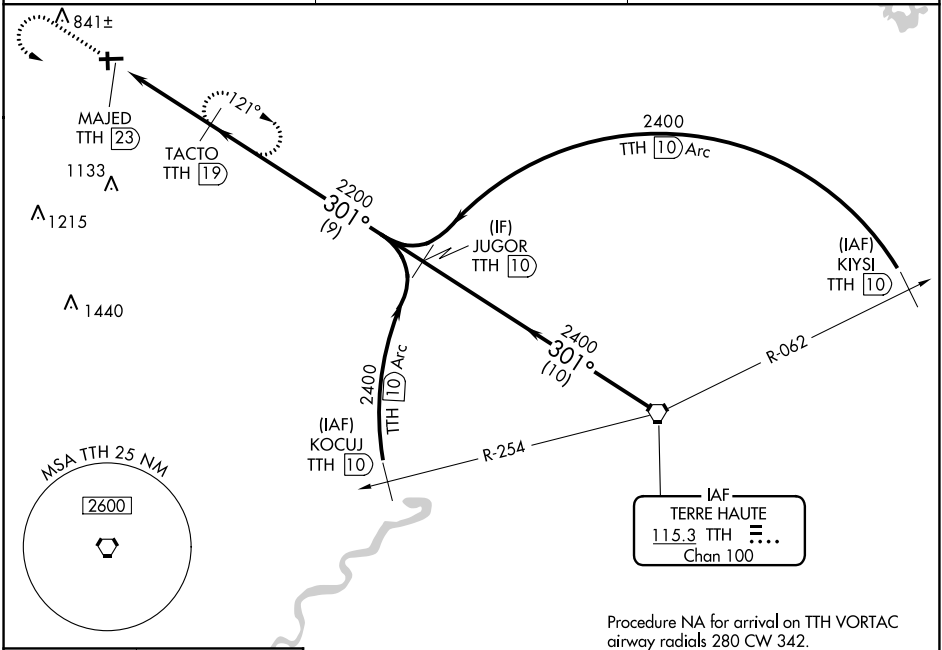
▼

▲

When local altimeter setting not received, use Terre Haute Rgnl altimeter setting and increase all MDA 80 feet; increase Cat C visibility ¼ mile. Visibility reduction by helicopters NA.

MISSED APPROACH: Climb to 2200 then left turn heading 080° and TTH VORTAC R-301 to TACTO/TTH 19 DME and hold.

AWOS-3 124.175	HULMAN APP CON 125.45 339.8	UNICOM 123.0 (CTAF) 0
--------------------------	---------------------------------------	---------------------------------



2200				TTH R-301				TACTO TTH 19				JUGOR TTH 10				TTH VORTAC			
hdg 080°				2200				301°				2400				2400			
MAJED TTH 23				TACTO TTH 19				2200				2400				2400			
4 NM				9 NM				10 NM											
CATEGORY				A				B				C				D			
CIRCLING				1300-1 646 (700-1)				1300-1¼ 646 (700-1¼)				1300-1¾ 646 (700-1¾)				NA			