

WAAS CH 61239 W27A	APP CRS 272°	Rwy Idg TDZE 651 Apt Elev 654
--	------------------------	---

RNAV (GPS) RWY 27

EDGAR COUNTY (PRG)

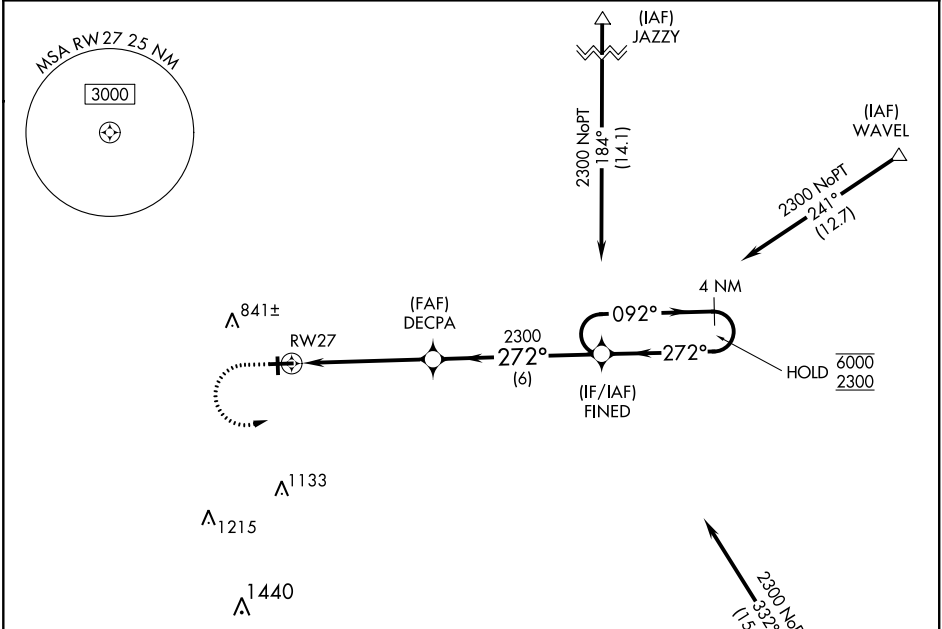
RNP APCH.

T

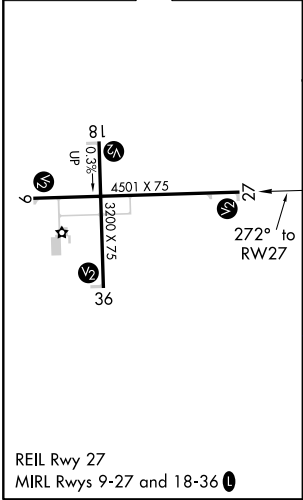
Circling Rwy 18 NA at night. For uncompensated Baro-VNAV systems, LNAV/VNAV NA below -16°C or above 54°C. Rwy 27 helicopter visibility reduction below ¾ SM NA.

MISSED APPROACH:
Climb to 1100 then
climbing left turn to 2300
direct FINED and hold.

AWOS-3 124.175	HULMAN APP CON 125.45 339.8	UNICOM 123.0 (CTAF) 0
--------------------------	---------------------------------------	---------------------------------



ELEV 654	TDZE 651
-----------------	-----------------



Procedure NA for arrivals on TTH VORTAC
airway radials 254 CW 303.

1100 2300 FINED

VGSI and RNAV glidepath not coincident
(VGSI Angle 3.15/TCH 26).

DECPA

FINED

4 NM Holding Pattern

* LNAV only.

* 1.2 NM to RWY 27

RWY 27

2300

272°

092°

6000

2300

GP 3.00°
TCH 40

1.2 NM 3.9 NM 6 NM

CATEGORY	A	B	C	D
LPV DA	901-1 250 (300-1)			
LNAV/VNAV DA	925-1 274 (300-1)			
LNAV MDA	1080-1 429 (500-1)		1080-1¼ 429 (500-1¼)	
CIRCLING	1080-1 426 (500-1)	1120-1 466 (500-1)	1180-1½ 526 (600-1½)	1320-2 666 (700-2)