

WAAS CH <b>86230</b> <b>W26A</b>	APP CRS <b>261°</b>	Rwy Idg TDZE <b>836</b> Apt Elev <b>836</b>
--	------------------------	---

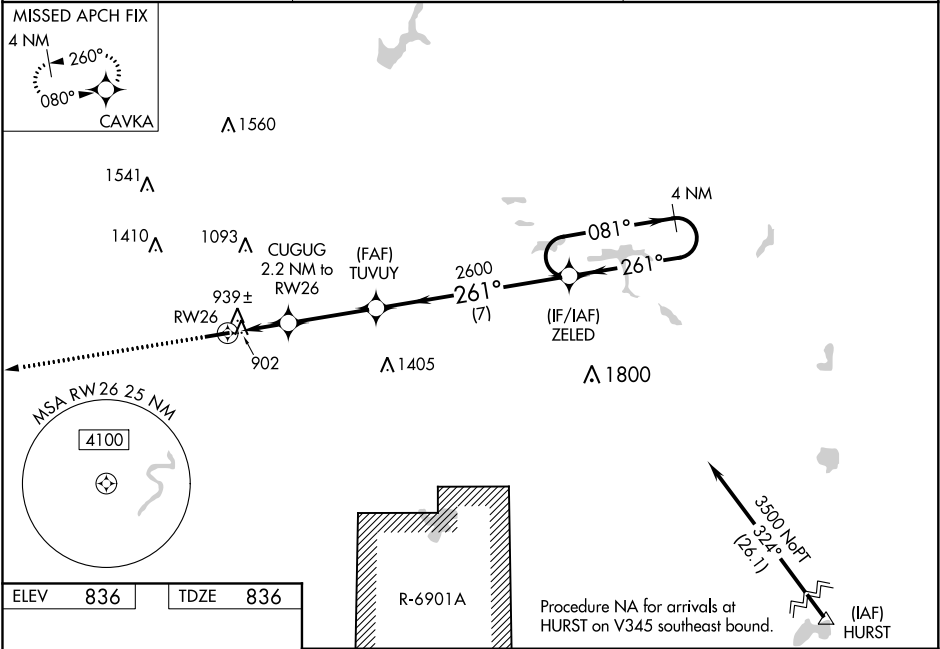
RNAV (GPS) RWY 26

BLACK RIVER FALLS AREA (BCK)

**⚠** For uncompensated Baro-VNAV systems, LNAV/VNAV NA below -16°C (4°F) or above 38°C (100°F). Baro-VNAV and VDP NA when using La Crosse altimeter setting. Rwy 26 helicopter visibility reduction below ¾ SM NA. DME/DME RNP-0.3 NA. When local altimeter setting not received, use La Crosse altimeter setting and increase all DA 91 feet and all MDA 100 feet and increase LPV all Cats visibility to 1½ SM, LNAV/VNAV all Cats to 1¼ SM, LNAV Cat C/D to 1¾ SM, and Circling Cat C to 1¾ SM, and Cat D to 2¼ SM.

MISSED APPROACH:  
Climb to 3500 direct  
CAVKA and hold.

AWOS-3PT <b>119.125</b>	MINNEAPOLIS CENTER <b>128.6 363.0</b>	CTAF <b>122.9</b>
----------------------------	--	----------------------



3500 CAVKA

VGSI and RNAV glidepath not coincident (VGSI Angle 3.50/TCH 27).

4 NM Holding Pattern

ZELED

081°

261°

3500

GP 3.00° TCH 50

TUVUY 2600

CUGUG 2.2 NM to RW26

\*LNAV only. \*0.9 NM to RW26

\*1580

2600

261°

0.9 NM 1.3 NM 3.2 NM 7 NM

CATEGORY	A	B	C	D
LPV DA		1087-1	251 (300-1)	
LNAV/VNAV DA		1120-1	284 (300-1)	
LNAV MDA		1200-1	364 (400-1)	
CIRCLING	1240-1 404 (500-1)	1360-1 524 (600-1)	1380-1½ 544 (600-1½)	1460-2 624 (700-2)