

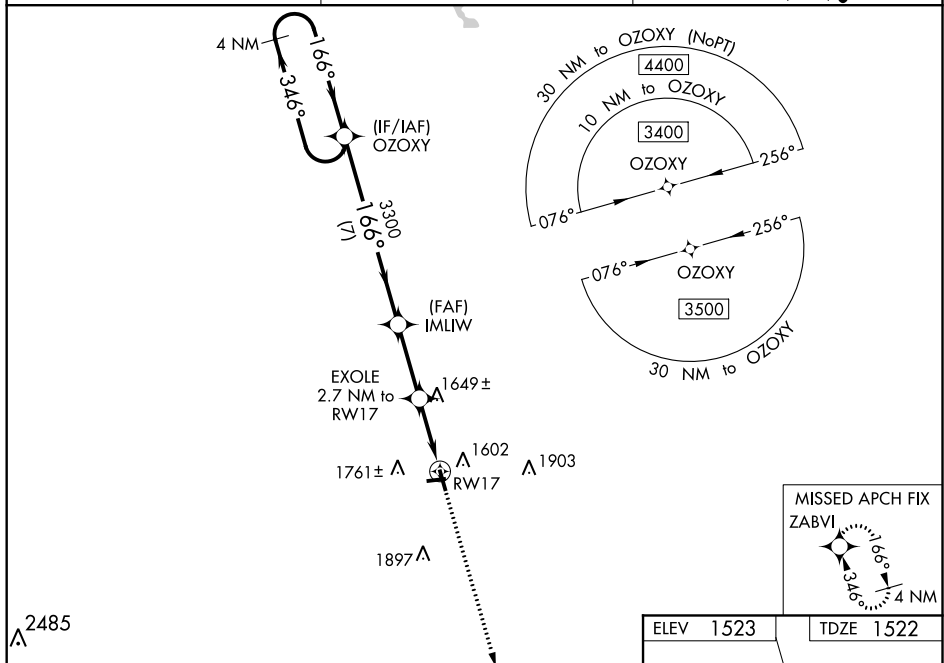
WAAS CH 49131 W17A	APP CRS 166°	Rwy Idg 4010 TDZE 1522 Apt Elev 1523
--	------------------------	---

RNAV (GPS) RWY 17

Baro-VNAV NA when using Wausau Downtown altimeter setting. For uncompensated Baro-VNAV systems, LNAV/VNAV NA below -18°C (0°F) or above 54°C (130°F). Procedure NA at night. DME/DME RNP-0.3 NA. Helicopter visibility reduction below 1 SM NA. When local altimeter setting not received, use Wausau Downtown altimeter setting; increase all DA 105 feet all LPV visibilities $\frac{1}{4}$ mile, and all LNAV/VNAV visibilities $\frac{3}{8}$ mile; increase all MDA 120 feet, LNAV Cat C and D visibilities $\frac{1}{4}$ mile, Circling Cat C visibility $\frac{1}{2}$ mile, and Cat D visibility $\frac{1}{4}$ mile.

MISSED APPROACH:
Climb to 3300 direct
ZABVI and hold.

AWOS-3 119.075	MINNEAPOLIS CENTER 124.4 317.7	UNICOM 122.8 (CTAF) 0
--------------------------	--	---------------------------------



4 NM
Holding Pattern

OZOXY

3400 ← 346°
→ 166°

IMLTW
3300

EXOLE
2.7 NM to
RW17

3300

*2420

GP 3.00°
TCH 40

RW17

7 NM 2.8 NM 2.7 NM

CATEGORY	A	B	C	D
LPV DA	1772-1		250 (300-1)	
LNAV/ VNAV DA	1924-1 $\frac{3}{8}$		402 (400-1 $\frac{3}{8}$)	
LNAV MDA	1920-1 398 (400-1)		1920-1 $\frac{1}{8}$ 398 (400-1 $\frac{1}{8}$)	
CIRCLING	2120-1 597 (600-1)		2120-1 $\frac{1}{2}$ 597 (600-1 $\frac{1}{2}$)	2120-2 597 (600-2)

*LNAV only.

3300 ZABVI

