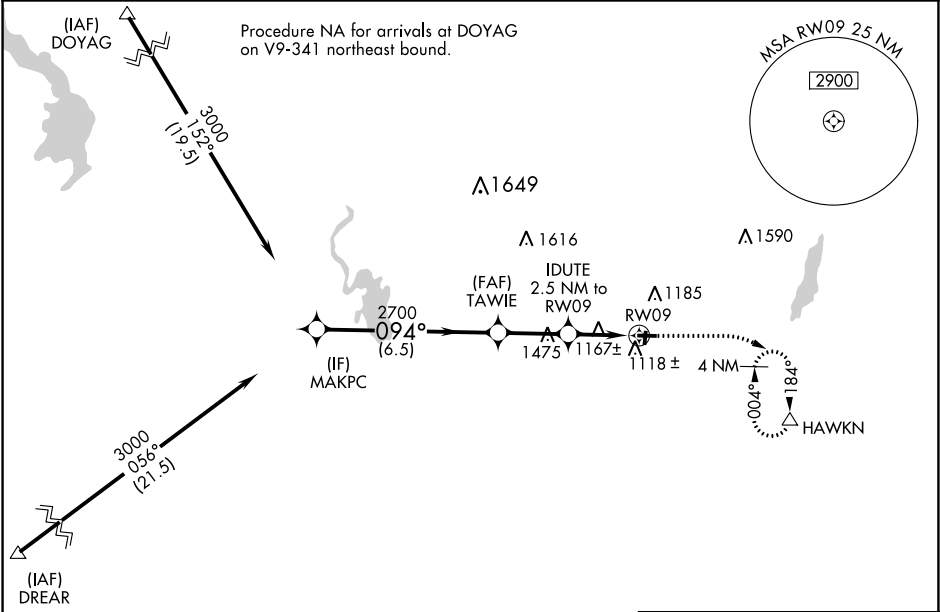


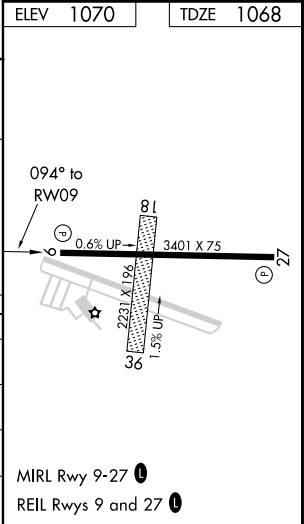
WAAS CH <b>42743</b> <b>W09A</b>	APP CRS <b>094°</b>	Rwy Idg TDZE Apt Elev	<b>3401</b> <b>1068</b> <b>1070</b>
--	------------------------	-----------------------------	---

RNAV (GPS) RWY 9  
HARTFORD MUNI (HXF)

RNP APCH. ▼ NA Circling NA to Rwys 18 and 36. Baro-VNAV NA. Use Westbend altimeter setting.		MISSED APPROACH: Climb to 1700 then climbing right turn to 3000 direct HAWKN and hold, continue climb-in-hold to 3000.
ETB AWOS-3 <b>120.0</b>	MILWAUKEE APP CON <b>125.35 307.0</b>	UNICOM <b>123.0 (CTAF) 0</b>



ELEV 1070		TDZE 1068	
MAKPC		TAWIE	
3000		2700	
GP 3.00° TCH 40		IDUTE 2.5 NM to RW09	
6.5 NM		2.5 NM	
CATEGORY		RW09	
LPV DA		NA	
LNAV/VNAV DA		NA	
LNAV MDA		NA	
CIRCLING		NA	



EC-3, 03 DEC 2020 to 31 DEC 2020

EC-3, 03 DEC 2020 to 31 DEC 2020