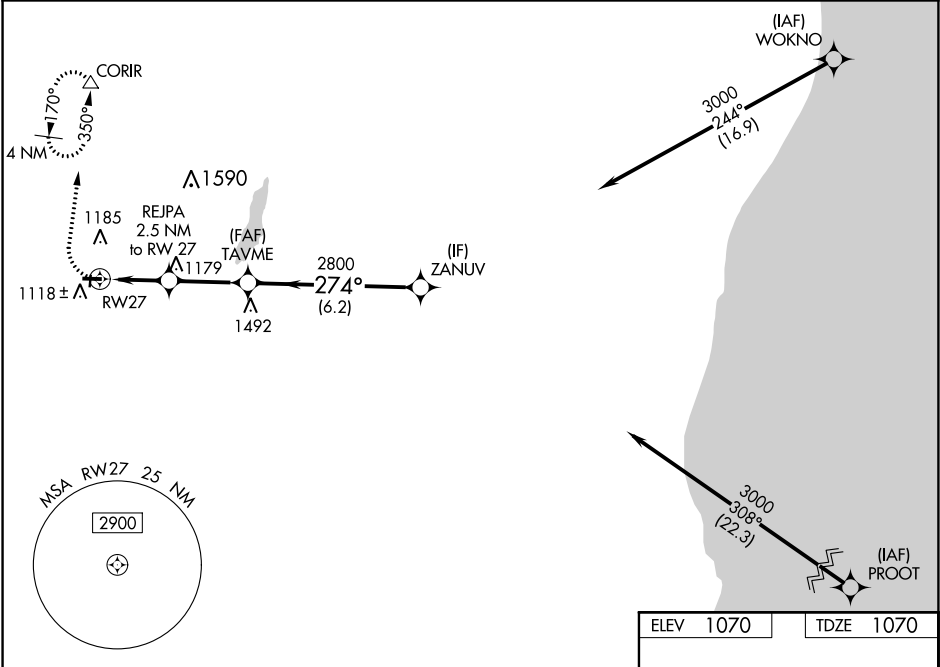


WAAS CH 86943 W27A	APP CRS 274°	Rwy Idg TDZE Apt Elev	3401 1070 1070
--	------------------------	-----------------------------	---

RNAV (GPS) RWY 27
HARTFORD MUNI (HXT')

RNP APCH.	<p>MISSED APPROACH: Climb to 1700 then climbing right turn to 3000 direct CORIR and hold, continue climb-in-hold to 3000.</p>
<p>NA</p> <p>Circling NA to Rwy 18 and 36. Rwy 27 helicopter visibility reduction below 3/4 SM NA. Baro-VNAV NA. Use West Bend altimeter setting.</p>	

ETB AWOS-3 120.0	MILWAUKEE APP CON 125.35 307.0	UNICOM 123.0 (CTAF) 0
----------------------------	--	---------------------------------



		ZANUV		TAVME		REJPA 2.5 NM to RW27		RW27	
		3000		2800		2800		2800	
		GP 3.00° TCH 40		2800		*1900		2800	
		274°		274°		274°		274°	
		6.2 NM		2.8 NM		2.5 NM			
CATEGORY		A		B		C		D	
LPV DA		1374-7/8		304 (400-7/8)				NA	
RNAV/VNAV DA		1415-1		345 (400-1)				NA	
RNAV MDA		1540-1		470 (500-1)				NA	
CIRCLING		1560-1		490 (500-1)				NA	

