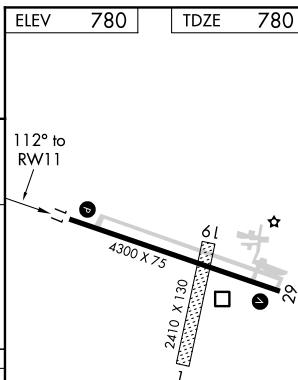
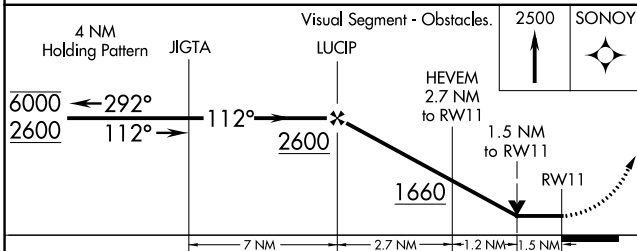
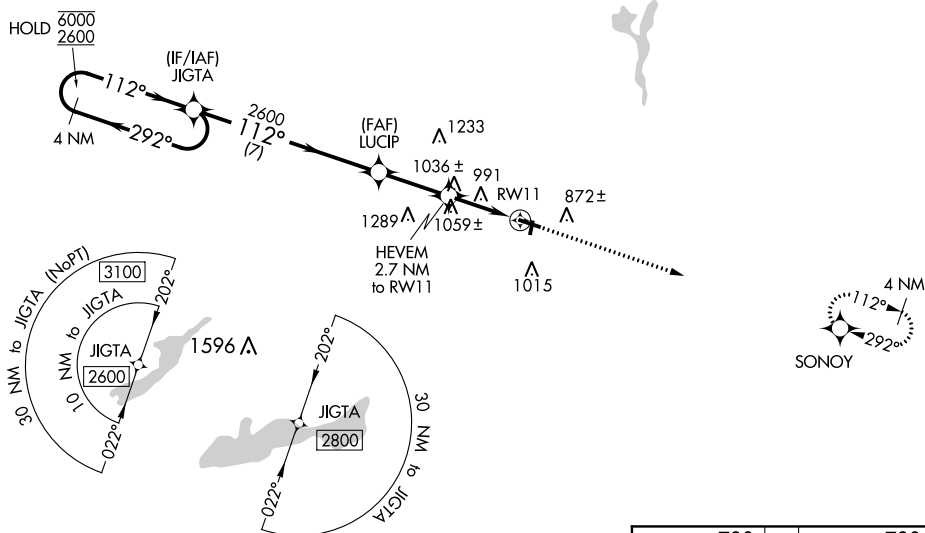


RNAV (GPS) RWY 11
BURLINGTON MUNI (BUU)

MISSED APPROACH:
Climb to 2500 direct
SONOY and hold.

UNICOM
123.05 (CTAF) **L**

CATEGORY	A	B	C	D
LP MDA	1300-1 520 (600-1)		1300-1½ 520 (600-1½)	
LNAV MDA	1320-1 540 (600-1)		1320-1⅝ 540 (600-1⅝)	
C CIRCLING	1320-1 540 (600-1)	1380-1 600 (600-1)	1380-1⅝ 600 (600-1⅝)	1560-2½ 780 (800-2½)

MIRL Rwy 11-29 **L**
REIL Rwys 11 and 29 **L**

EC-3, 03 DEC 2020 to 31 DEC 2020