

WAAS CH 78331 W36A	APP CRS 359°	Rwy Idg TDZE 680 Apt Elev 684
--	------------------------	---

RNAV (GPS) RWY 36

INGERSOLL (CTK)

⚠

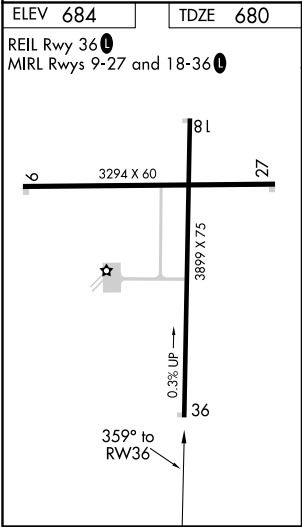
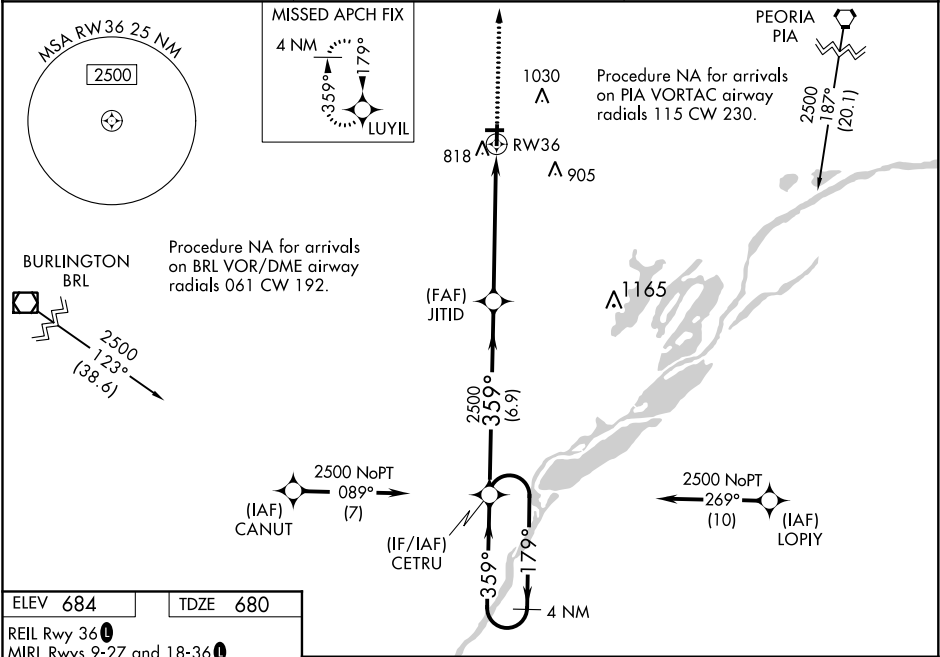
NA

Night landing: Rwy 09, 18, 27 NA. Baro-VNAV NA when using General Downing-Peoria Intl altimeter setting. For uncompensated Baro-VNAV systems, LNAV/VNAV NA below -16°C (4°F) or above 54°C (130°F). DME/DME RNP-0.3 NA. Helicopter visibility reduction below ¾ SM NA. When local altimeter setting not received, use General Downing-Peoria Intl altimeter setting and increase all DA 46 feet and all MDA 60 feet; increase LPV and LNAV/VNAV all Cats visibility ½ mile. VDP NA when using General Downing-Peoria Intl altimeter setting.

MISSED APPROACH:

Climb to 2500 direct LUYIL and hold.

AWOS-A 122.8	PEORIA APP CON 124.675 269.2	UNICOM 122.8 (CTAF) 0
------------------------	--	---------------------------------



2500	LUYIL				
		JITID	CETRU	4 NM Holding Pattern	
*LNAV only.					
		2500	2500	2500	GP 3.00° TCH 40
		1.3 NM	4.3 NM	6.9 NM	
		RW36			
CATEGORY	A	B	C	D	
LPV DA	930-7½	250 (300-7½)		NA	
LNAV/VNAV DA	998-1½	318 (400-1½)		NA	
LNAV MDA	1120-1	440 (500-1)	1120-1½ 440 (500-1½)	NA	
CIRCLING	1140-1	456 (500-1)	1140-1½ 456 (500-1½)	NA	