

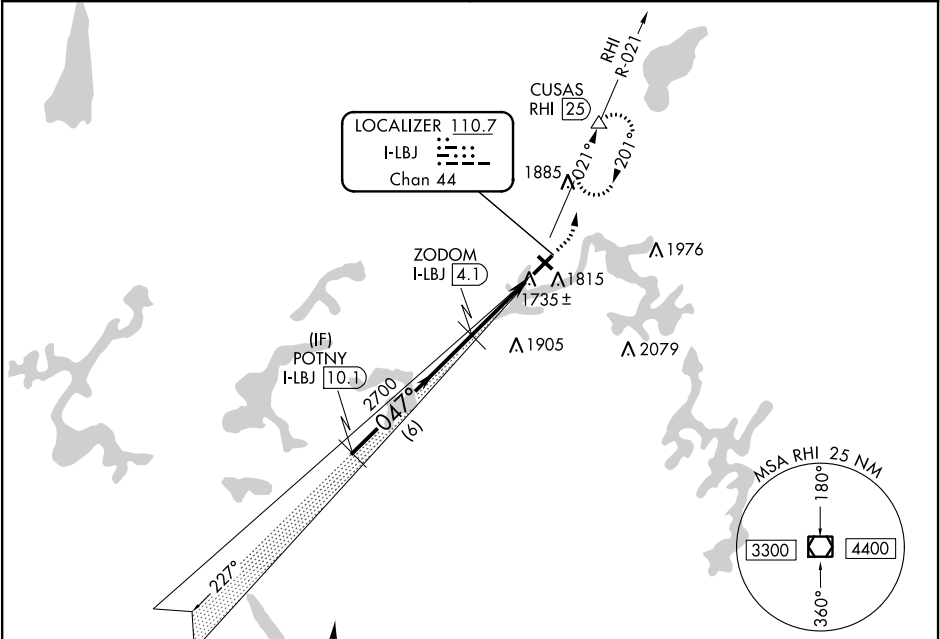
▼

NA

Visibility reduction by helicopters NA.  
When local altimeter setting not received, use  
Minocqua-Woodruff altimeter and increase all MDA 60 feet.

MISSED APPROACH: Climb to 2100 then climbing  
left turn to 3500 on heading 015° and RHI R-021  
to CUSAS/RHI 25 DME and hold.

AWOS-3 <b>118.325</b>	MINNEAPOLIS CENTER <b>133.65 281.5</b>	UNICOM <b>122.8</b> (CTAF) <b>0</b>
--------------------------	---	--



Procedure NA for arrivals at  
RHI VOR/DME via V191  
southeast bound, V63 southbound.

Procedure NA

Procedure NA

VGSI and descent angles not coincident (VGSI Angle 3.00/TCH 45).		2100	3500	hdg 015°	RHI R-021	CUSAS △
POTNY I-LBJ 10.1						
Procedure Turn NA	3400	ZODOM I-LBJ 4.1	I-LBJ 0.9			
	047°	2700	3.03° TCH 40			
6 NM		3.2 NM				
CATEGORY	A	B	C	D		
S-4	2000-1		358 (400-1)			
CIRCLING	2120-1 478 (500-1)		2120-1½ 478 (500-1½)	2200-2 558 (600-2)		

047° 3.2 NM from FAF

REIL Rwy 4 and 22  
MIRL Rwy 4-22 and 13-31