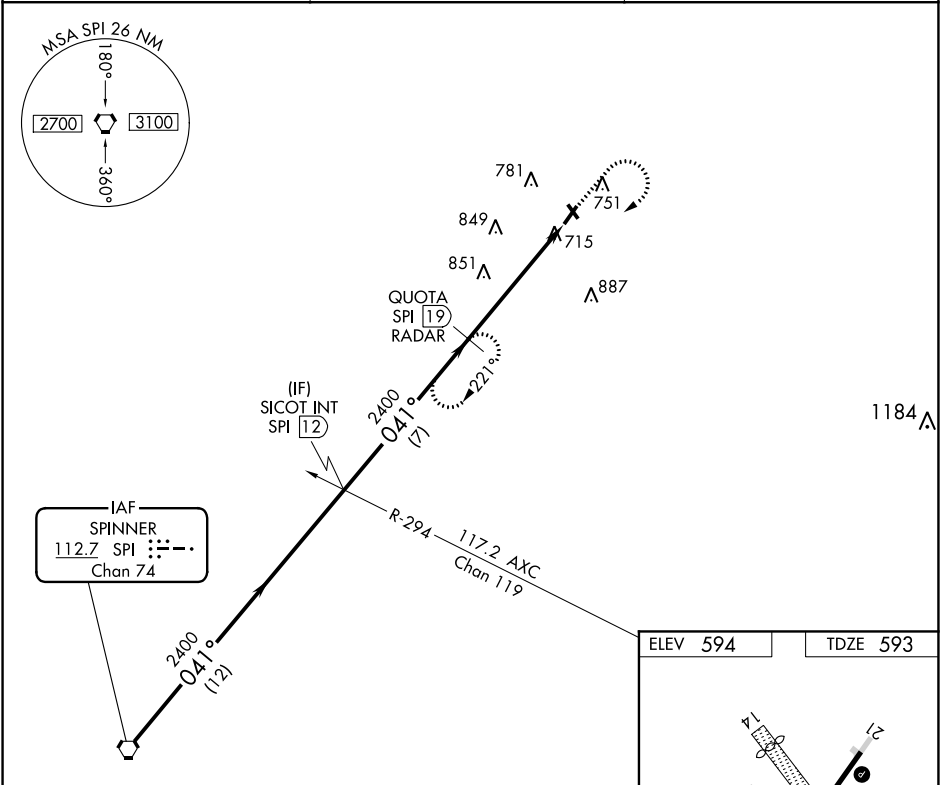


VORTAC SPI 112.7 Chan 74	APP CRS 041°	Rwy Idg TDZE 593 Apt Elev 594
--	------------------------	---

VOR RWY 3
LOGAN COUNTY (AAA)

DME or RADAR required.	MISSED APPROACH: Climb to 2000 then climbing right turn to 2400 via SPI R-041 to QUOTA/19 DME/RADAR and hold.
▼ If local altimeter setting not received, use Springfield, IL altimeter setting and increase all MDAs 60 feet. Circling NA to Rwy 14 and 32. Rwy 3 helicopter visibility reduction below ¾ SM NA.	

AWOS-3 118.775	SPRINGFIELD APP CON ★ 126.15 323.0	UNICOM 122.8 (CTAF) 0
--------------------------	--	--



Procedure Turn NA	VGSI and descent angles not coincident (VGSI Angle 3.50/TCH 26).			
SPI VORTAC	SICOT INT SPI 12	QUOTA SPI 19 RADAR	2000	2400
2400	041°	2400	↑	QUOTA SPI 19
12 NM	7 NM	5.4 NM	3.09° TCH 36	SPI 24.4
CATEGORY	A	B	C	D
S-3	1120-1 527 (600-1)	1120-1¼ 527 (600-1¼)	1120-1½ 527 (600-1½)	1120-1¾ 527 (600-1¾)
CIRCLING	1140-1 546 (600-1)	1140-1¼ 546 (600-1¼)	1140-1½ 546 (600-1½)	1160-2 566 (600-2)

