

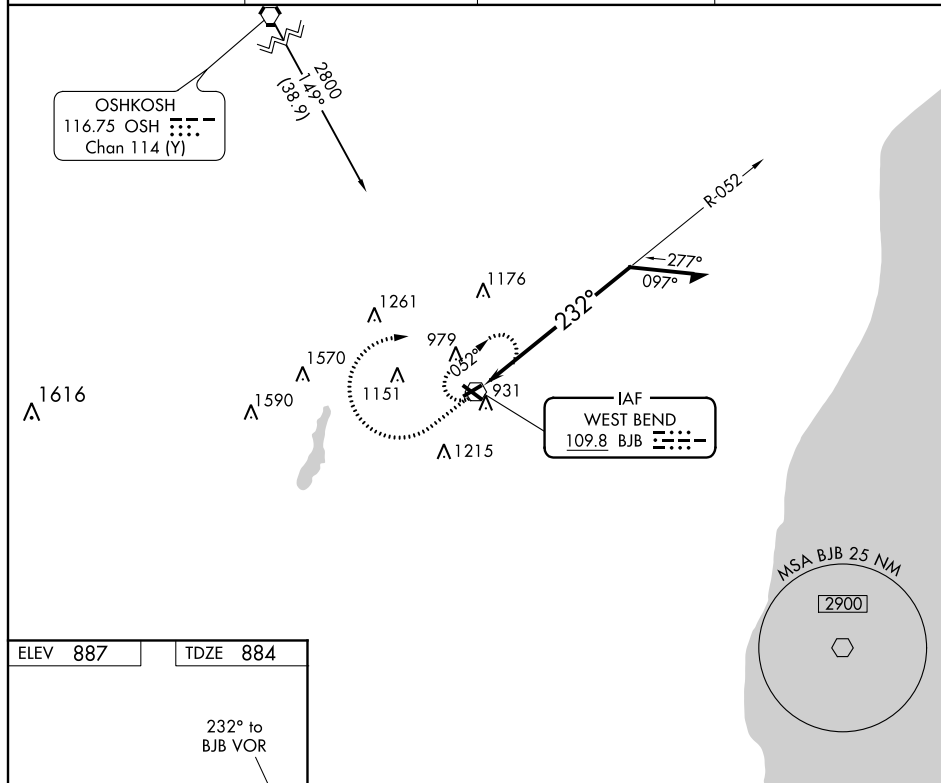
VOR BJB <u>109.8</u>	APP CRS 232°	Rwy Idg 3897 TDZE 884 Apt Elev 887
--------------------------------	------------------------	---

VOR RWY 24
WEST BEND MUNI (ETB)

T Helicopter visibility reduction below 1 SM NA. When local altimeter setting not received, use Milwaukee/Lawrence J. Timmerman altimeter setting and increase all MDA 80 feet, increase all Cat C/D visibilities ¼ mile. Night landing: Rwy 6, 24 NA.

MISSED APPROACH: Climb to 1900 then climbing right turn 2700 direct BJB VOR and hold, continue climb-in-hold to 2700.

AWOS-3 120.0	MILWAUKEE APP CON 125.35 307.0	CLNC DEL 124.75	UNICOM 122.8 (CTAF) 0
------------------------	--	---------------------------	---------------------------------



REIL Rwy 13 and 31
MRL Rwy 6-24 and 13-31

CATEGORY	A	B	C	D
S-24	1500-1	616 (700-1)	1500-1 $\frac{3}{4}$ 616 (700-1 $\frac{3}{4}$)	1500-2 616 (700-2)
CIRCLING	1500-1	613 (700-1)	1500-1 $\frac{3}{4}$ 613 (700-1 $\frac{3}{4}$)	1520-2 633 (700-2)