

WAAS CH 69532 W10A	APP CRS 103°	Rwy Idg TDZE 897 Apt Elev 906	5006
----------------------------------------	------------------------	---------------------------------------------------	-------------

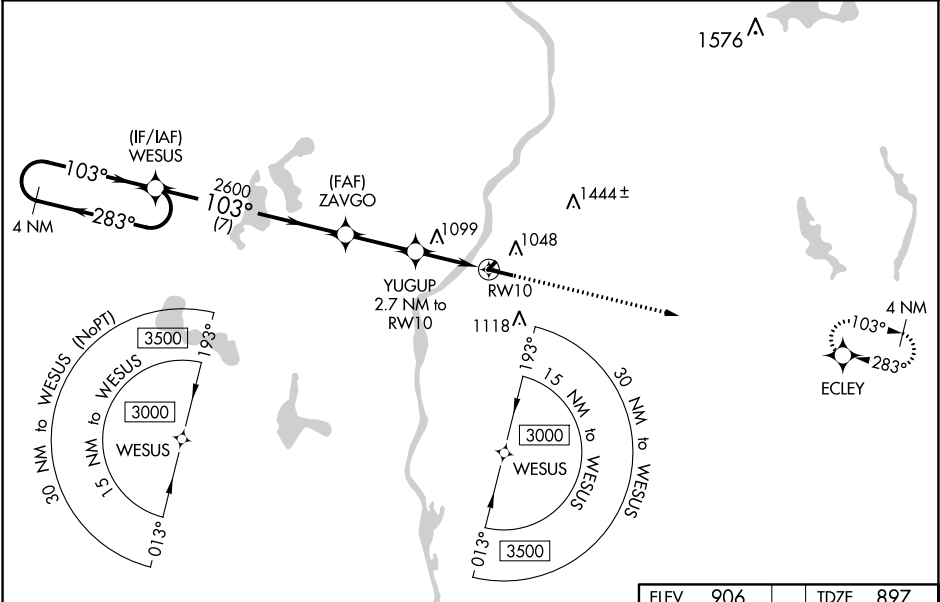
RNAV (GPS) RWY 10

L O SIMENSTAD MUNI (OEO)

⚠ For uncompensated Baro-VNAV systems, LNAV/VNAV NA below -16°C (4°F) or above 54°C (130°F).
⚠ DME/DME RNP-0.3 NA. VDP and Baro-VNAV NA when using Anoka County-Blaine (Janes Field) altimeter setting. When local altimeter setting not received, use Anoka County-Blaine (Janes Field) altimeter setting and increase all DA 57 feet and all MDA 60 feet. Increase LPV all Cats and LNAV Cat C visibility ½ mile, LNAV/VNAV all Cats and Circling Cat C visibility ¼ mile. Helicopter visibility reduction below ¾ SM NA.

MISSED APPROACH:
Climb to 3000 direct
ECLEY and hold.

AWOS-3 119.925	MINNEAPOLIS APP CON 121.2 335.65	GCO 121.725	CTAF 122.9 0
--------------------------	--------------------------------------------	-----------------------	------------------------



4 NM Holding Pattern WESUS

3000 ← 283° → 103° → 103°

GP 3.00° TCH 35

ZAVGO 2600

YUGUP 2.7 NM to RW10

*1760

*1.4 NM to RW10

RW10

7 NM 2.6 NM 1.3 NM 1.4 NM

3000 ECLEY

*LNAV only

CATEGORY	A	B	C	D
LPV DA	1147-7/8 250 (300-7/8)			NA
LNAV/VNAV DA	1190-1 293 (300-1)			NA
LNAV MDA	1360-1 463 (500-1)	1360-1 3/8 463 (500-1 3/8)		NA
CIRCLING	1360-1 454 (500-1)	1500-1 594 (600-1)	1520-1 3/4 614 (700-1 3/4)	NA

ELEV 906 TDZE 897

REIL Rwy 28 0

MIRL Rwy 10 and 28 0