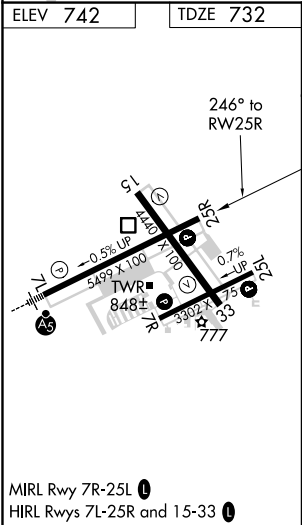
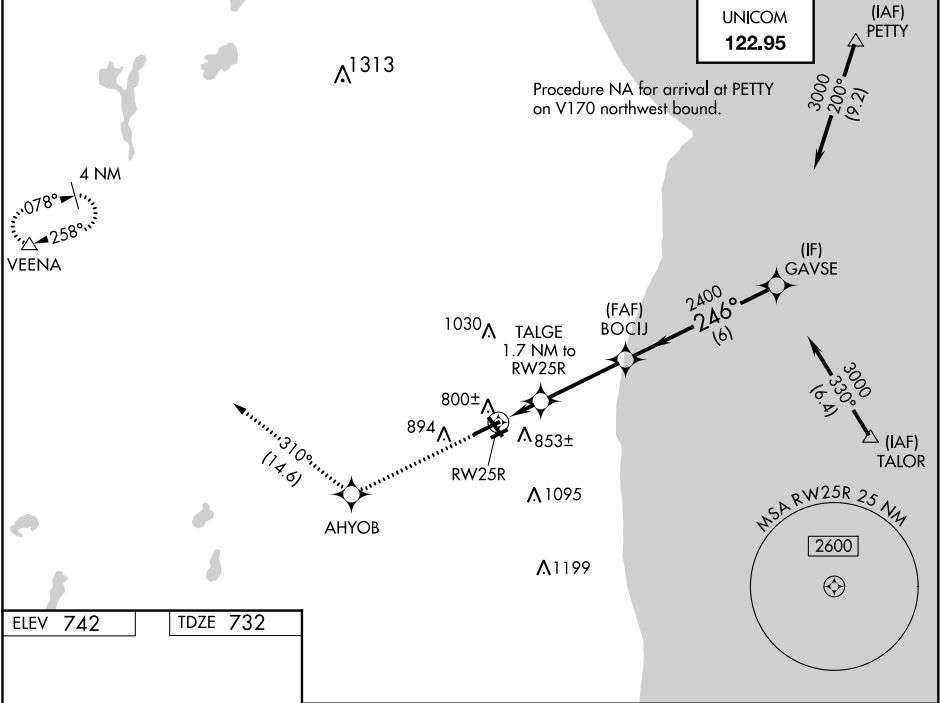


WAAS CH 49014 W25A	APP CRS 246°	Rwy Idg 5499 TDZE 732 Apt Elev 742
--	------------------------	---

RNAV (GPS) RWY 25R

KENOSHA RGNL (ENW)

RNP APCH. ▼ Circling Rwy 7R, 15 NA at night. For uncompensated Baro-VNAV systems, LNAV/VNAV NA below -16°C or above 47°C.			MISSED APPROACH: Climb to 3000 direct AHYOB and on track 310° to VEENA and hold.		
ATIS 127.175	MILWAUKEE APP CON 135.875 317.725	KENOSHA TOWER ★ 118.6 (CTAF) 0 353.6	GND CON 121.875	CLNC DEL 121.875	CLNC DEL 118.6 (When twr closed)



3000	AHYOB	tr 310°	VEENA	
* LNAV only				
TALGE 1.7 NM to RW25R				
* 1.1 NM to RW25R				
BOCIJ				
* 1280				
2400				
3000				
GP 3.00°				
TCH 45				
1.1 NM 0.6 NM 3.4 NM 6 NM				
CATEGORY	A	B	C	D
LPV DA	982-1 250 (300-1)			
LNAV/VNAV DA	1064-1¼ 332 (400-1¼)			
LNAV MDA	1140-1 408 (400-1)	1140-1½ 408 (400-1½)	1140-1¼ 408 (400-1¼)	
CIRCLING	1200-1 458 (500-1)	1200-1½ 458 (500-1½)	1340-2 598 (600-2)	