

WAAS CH <b>49000</b> <b>W21A</b>	APP CRS <b>205°</b>	Rwy Idg TDZE Apt Elev	<b>5002</b> <b>1216</b> <b>1216</b>
--	------------------------	-----------------------------	---

RNAV (GPS) RWY 21

SAWYER COUNTY (HYR)

RNP APCH.

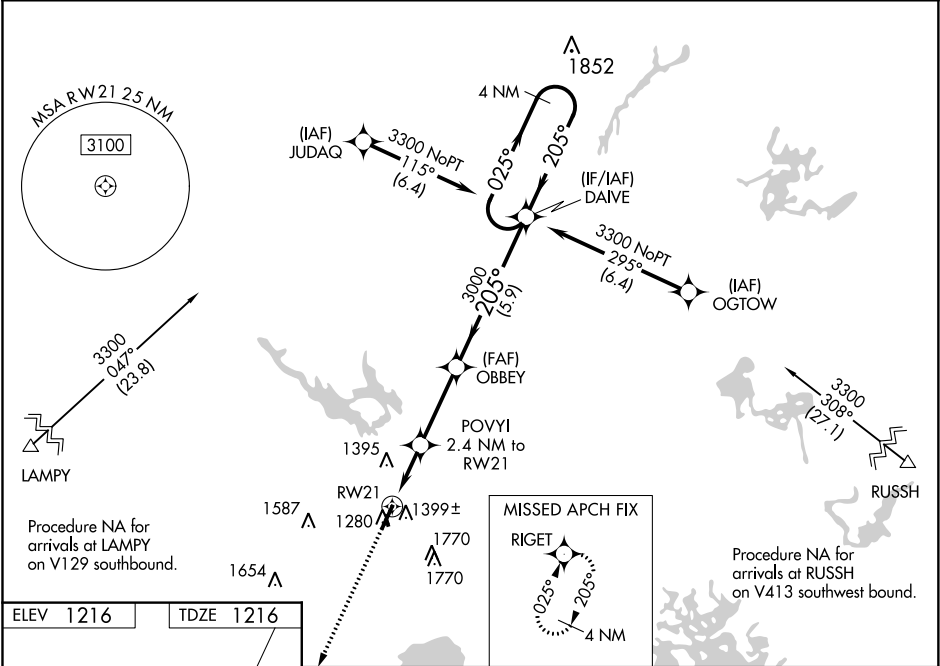
⚠

For uncompensated Baro-VNAV systems, LNAV/VNAV NA below -22°C (-7°F) or above 54°C (130°F). For inop MALSR, increase LNAV/VNAV all Cats visibility to 1½ mile and LNAV Cat A and B visibility to 1 mile. Rwy 21 helicopter visibility reduction below ¾ SM NA. Circling NA to Rwy 16 and 34.

MALSR

MISSED APPROACH: Climb to 3100 direct RIGET and hold.

ASOS <b>118.4</b>	MINNEAPOLIS CENTER <b>126.45 276.4</b>	UNICOM <b>122.8 (CTAF) 0</b>
----------------------	---	---------------------------------



ELEV 1216 TDZE 1216

REIL Rwy 3 0  
MIRL Rwy 3-21 0

		POVYI 2.4 NM to RW21		OBVEY 3000	DAIVE	4 NM Holding Pattern
*1.2 NM to RW21		*2020		3000	GP 3.00° TCH 42	
1.2 NM		1.2 NM	3.1 NM	5.9 NM		
CATEGORY	A	B	C	D		
LPV DA	1518-¾		302 (400-¾)			
LNAV/VNAV DA	1560-¾		344 (400-¾)			
LNAV MDA	1640-¾		424 (500-¾)			
CIRCLING	1860-1 644 (700-1)	2060-1¼ 844 (900-1¼)	2120-2¾ 904 (1000-2¾)	2120-3 904 (1000-3)		

EC-3, 03 DEC 2020 to 31 DEC 2020

EC-3, 03 DEC 2020 to 31 DEC 2020