

WAAS
CH **65807**
W31A

APP CRS
313°

Rwy Idg
TDZE
Apt Elev
3498
827
827

RNAV (GPS) RWY 31

JOHN F KENNEDY MEMORIAL (ASX)

⚠

⚠

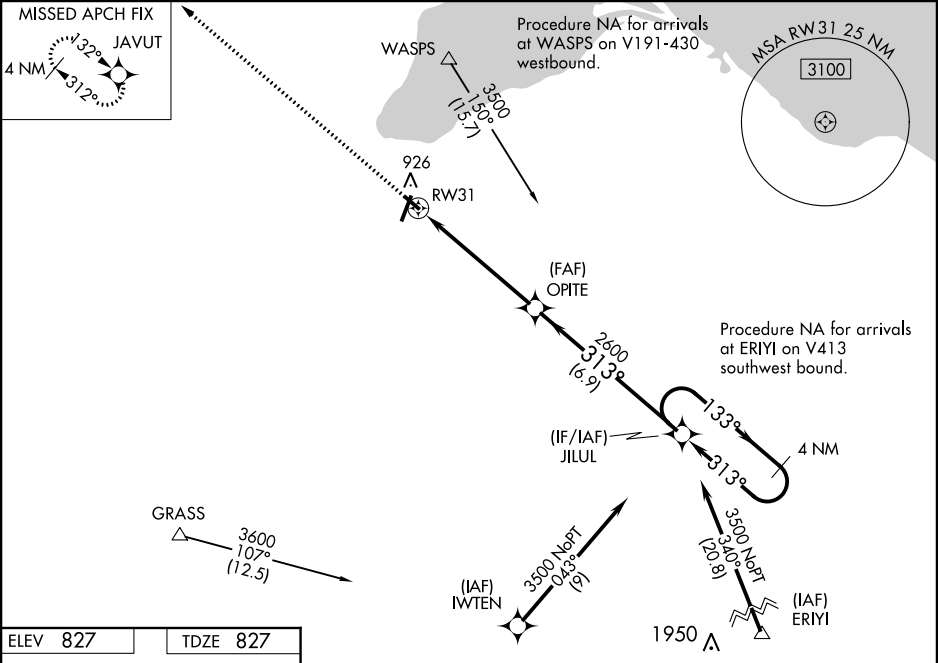
❄

-31°C

For uncompensated Baro-VNAV systems, LNAV/VNAV NA below -28°C (-18°F) or above 54°C (130°F). DME/DME RNP-0.3 NA. Helicopter visibility reduction below ¾ SM NA. Baro-VNAV and VDP NA when using Ironwood altimeter setting. When local altimeter setting not received, use Ironwood altimeter setting and increase all DAs 132 feet and all MDAs 140 feet; increase LPV all Cats and LNAV Cat C/D visibility ¾ mile, LNAV/VNAV all Cats and Circling Cat C/D visibility ½ mile.

MISSED APPROACH:
Climb to 3500 direct JAVUT and hold.

ASOS 126.775	MINNEAPOLIS CENTER 126.45 276.4	GCO 122.25	UNICOM 122.8 (CTAF) 0
------------------------	---	----------------------	---------------------------------



ELEV 827

TDZE 827

3500 JAVUT

* LNAV only

RW31

OPITE 2600

JILUL

4 NM Holding Pattern

GP 3.00° TCH 37

1.2 NM

4.3 NM

6.9 NM

13

20

878

3498 X 75

0.4% UP

313° to RW31

REIL Rwy 2

MIRL Rwy 2-20 and 13-31

CATEGORY	A	B	C	D
LPV DA		1077-7/8	250 (300-7/8)	
LNAV/VNAV DA		1125-1	298 (300-1)	
LNAV MDA	1240-1	413 (500-1)	1240-1¼	413 (500-1¼)
CIRCLING	1240-1 413 (500-1)	1280-1 453 (500-1)	1440-1¾ 613 (700-1¾)	1560-2¼ 733 (800-2¼)