

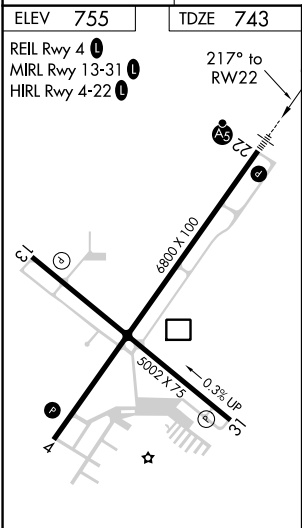
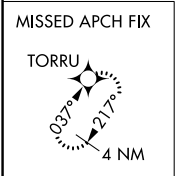
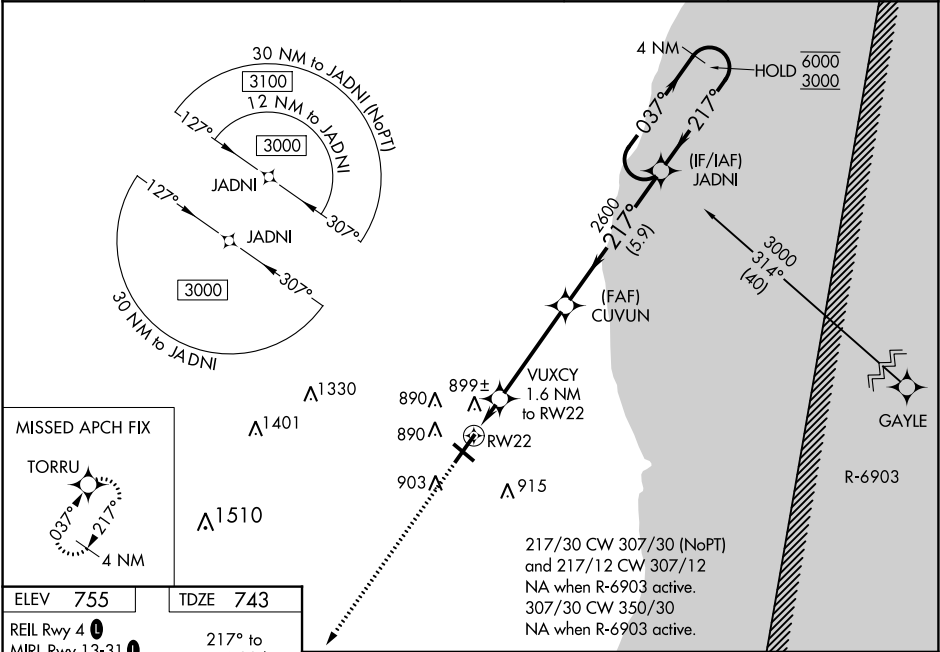
WAAS CH <b>65904</b> <b>W22A</b>	APP CRS <b>217°</b>	Rwy Idg TDZE Apt Elev	<b>6800</b> <b>743</b> <b>755</b>
--	------------------------	-----------------------------	---

RNAV (GPS) RWY 22

SHEBOYGAN COUNTY MEMORIAL (SBM)

RNP APCH.		MALSR	MISSED APPROACH: Climb to 3000 direct TORRU and hold.
	For uncompensated Baro-VNAV systems, LNAV/VNAV NA below -20°C or above 54°C. For inop ALS, increase LNAV Cat C/D visibility to 1½ SM.		

ASOS <b>118.425</b>	MILWAUKEE APP CON <b>127.375 263.075</b>	GCO <b>121.725</b>	CLNC DEL <b>127.375</b>	UNICOM <b>122.7 (CTAF) 0</b>
------------------------	---	-----------------------	----------------------------	---------------------------------



ELEV 755 TDZE 743		3000 TORRU			
REIL Rwy 4 MIRL Rwy 13-31 HIRL Rwy 4-22		4 NM Holding Pattern			
217° to RW22		JADNI			
*LNAV only		CUVUN			
VUXCY 1.6 NM to RW22		2600			
RW22		2600			
1.6 NM 4.1 NM 5.9 NM		GP 3.00° TCH 50			
CATEGORY	A	B	C	D	
LPV DA	943-½		200 (200-½)		
LNAV/VNAV DA	1188-⅞		445 (500-⅞)		
LNAV MDA	1160-½	417 (500-½)	1160-¾	417 (500-¾)	
CIRCLING	1200-1 445 (500-1)	1220-1 465 (500-1)	1240-1½ 485 (500-1½)	1360-2 605 (700-2)	