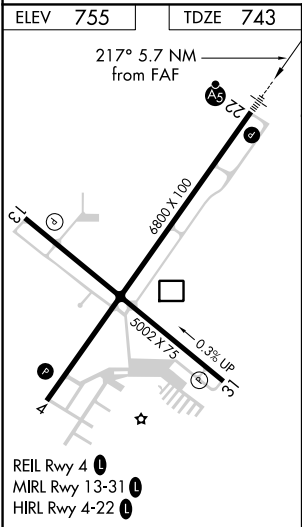
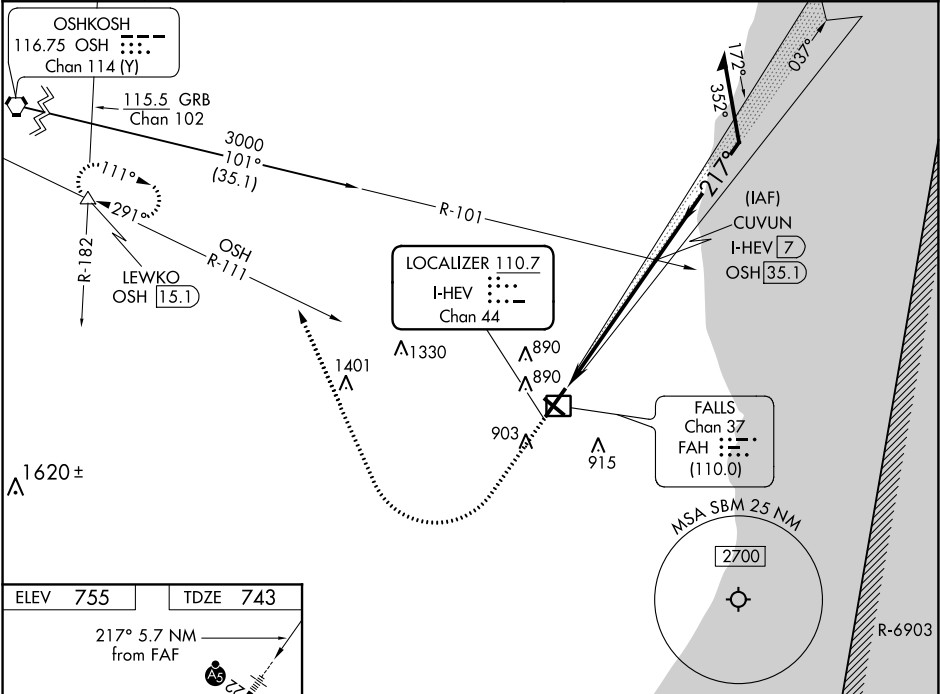


LOC/DME I-HEV <b>110.7</b> Chan <b>44</b>	APP CRS <b>217°</b>	Rwy Idg TDZE <b>743</b> Apt Elev <b>755</b>
---	------------------------	---

ILS or LOC RWY 22

SHEBOYGAN COUNTY MEMORIAL (SBM)

DME required. <div><div>▽</div><div>▲ NA</div></div>		MALSR <div><div>AS</div><div></div></div>	MISSED APPROACH: Climb to 1400 then climbing right turn to 3000 on heading 338° and OSH VORTAC R-111 to LEWKO INT/OSH 15.1 DME and hold.	
ASOS <b>118.425</b>	MILWAUKEE APP CON <b>127.375 263.075</b>	GCO <b>121.725</b>	CLNC DEL <b>127.375</b>	UNICOM <b>122.7 (CTAF) 0</b>



1400	3000	OSH	LEWKO	Use I-HEV DME when on the localizer course.	
↑	hdg 338°	R-111	△	CUVUN I-HEV 7	Remain within 10 NM
*LOC only.					
*I-HEV 1.3		*I-HEV 2.6		GS 3.00° TCH 50	
1.3 NM		4.4 NM			
CATEGORY	A	B	C	D	
S-ILS 22	943-1/2 200 (200-1/2)				
S-LOC 22	1200-1/2 457 (500-1/2)		1200-7/8 457 (500-7/8)		
CIRCLING	1200-1 445 (500-1)	1220-1 465 (500-1)	1240-1 1/2 485 (500-1 1/2)	1360-2 605 (700-2)	