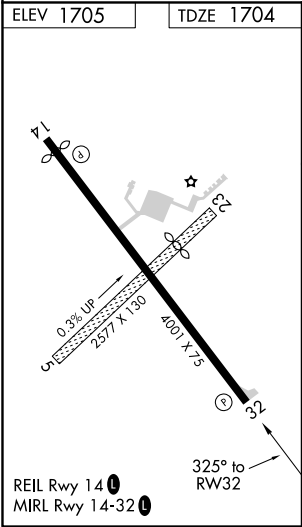
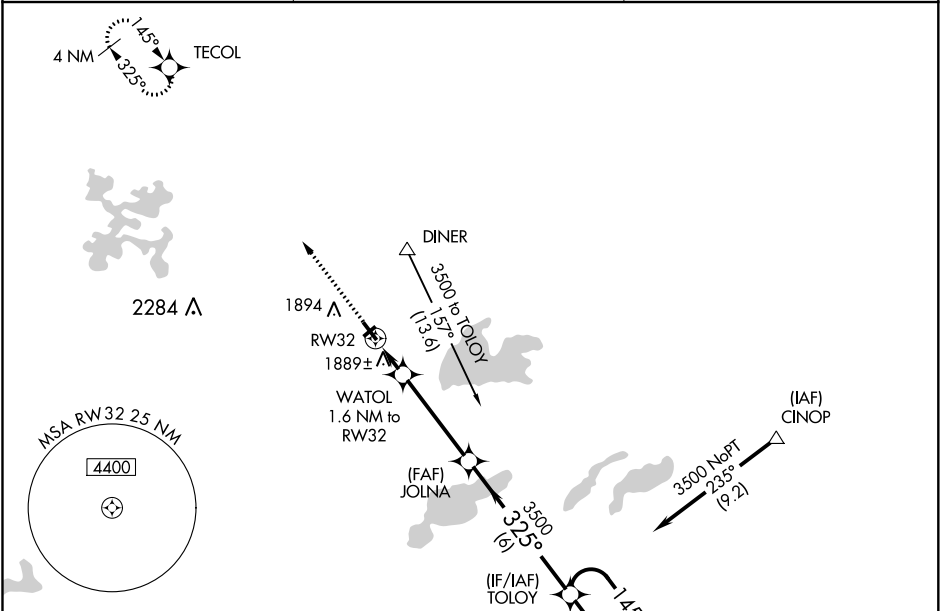


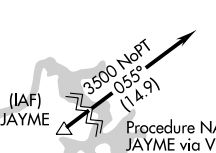

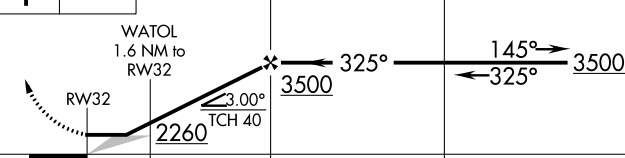

APP CRS	Rwy Idg	4001
325°	TDZE	1704
	Apt Elev	1705

RNAV (GPS) RWY 32
KINGS LAND O' LAKES (LNL)

<p>▼ If local altimeter setting not received, use Eagle River Union altimeter setting and increase all MDAs 40 feet. ▲ DME/DME RNP-0.3 NA. Helicopter visibility reduction below 1 SM NA. Circling NA to Rwy 5 and 23. Straight-in Rwy 32 NA at night, Circling Rwy 32 NA at night.</p>	<p>MISSED APPROACH: Climb to 3500 direct TECOL and hold.</p>
---	--

AWOS-3 119.525	MINNEAPOLIS CENTER 133.65 281.5	UNICOM 122.8 (CTAF) 0
-------------------	------------------------------------	---------------------------------



 <p>(IAF) JAYME</p> <p>3500 NoPT 055° (1.4.9)</p> <p>323°</p> <p>4 NM</p> <p>Procedure NA for arrival at JAYME via V63 southwestbound.</p>				
3500 ↑	TECOL 	VGSi and descent angles not coincident (VGSi Angle 3.00/TCH 26).		
		JOLNA	TOLOY	4 NM Holding Pattern
 <p>3500</p> <p>325°</p> <p>145°</p> <p>3500</p> <p>3.00°</p> <p>TCH 40</p> <p>2260</p> <p>1.6</p> <p>3.9 NM</p> <p>6 NM</p>				
CATEGORY	A	B	C	D
LNAV MDA	2140-1	436 (500-1)	2140-1¼ 436 (500-1¼)	NA
 CIRCLING	2200-1 495 (500-1)	2240-1 535 (600-1)	2240-1½ 535 (600-1½)	NA