

NDB PLX	APP CRS	Rwy Idg	3398
391	156°	TDZE	455
		Apt Elev	461

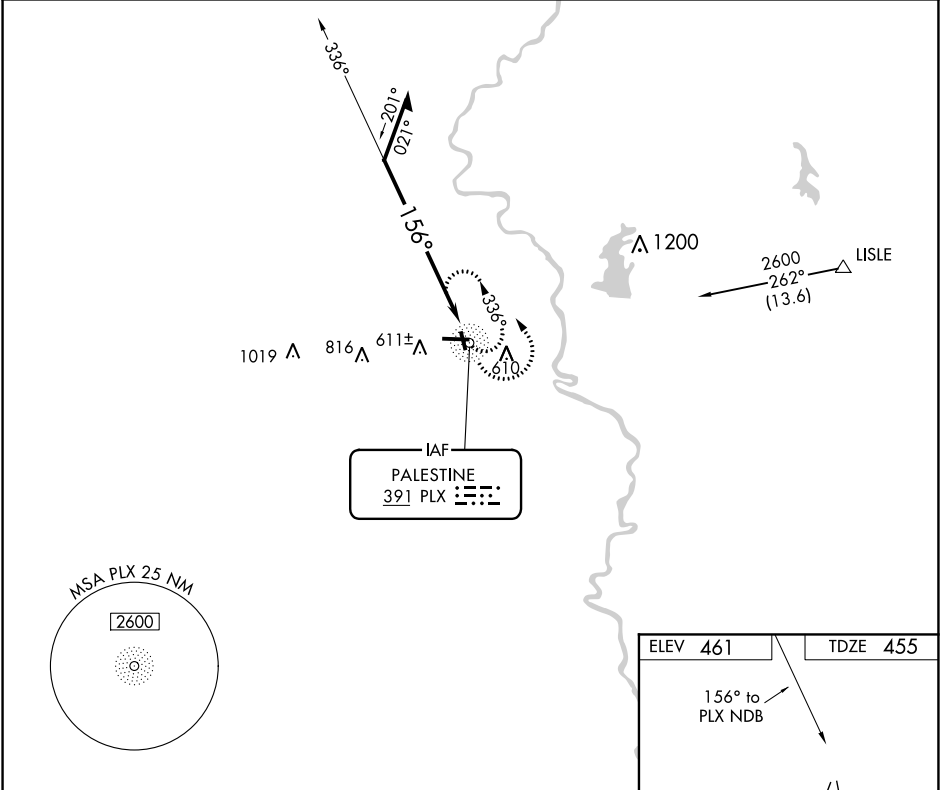
NDB RWY 17

CRAWFORD CO (RSV)

**⚠** When local altimeter setting not received, use Terre Haute Rgnl altimeter setting and increase all MDA 100 feet; increase S-17 Cat B visibility ¼ mile and Cats C/D visibility ½ mile, increase Circling Cat B visibility ¼ mile and Cats C/D visibility ½ mile. Helicopter visibility reduction below 1 SM NA. Rwy 17 Straight-in and Circling minimums NA at night.

**MISSED APPROACH:**  
Climbing left turn to 2200 in PLX NDB holding pattern.

AWOS-3 120.50	HULMAN APP CON 119.25 339.8	UNICOM 123.0 (CTAF) 0
------------------	--------------------------------	--------------------------



Remain within 10 NM

2200

336°

156°

PLX NDB

2200

PLX

ELEV 461

TDZE 455

156° to PLX NDB

5108 X 100

3398 X 75

35

27

17

9

CATEGORY	A	B	C	D
S-17	1160-1	705 (700-1)	1160-2	705 (700-2)
CIRCLING	1160-1	699 (700-1)	1160-2 699 (700-2)	1180-2¼ 719 (800-2¼)

REIL Rwy 9, 17 and 27 0  
MIRL Rwy 9-27 and 17-35 0