


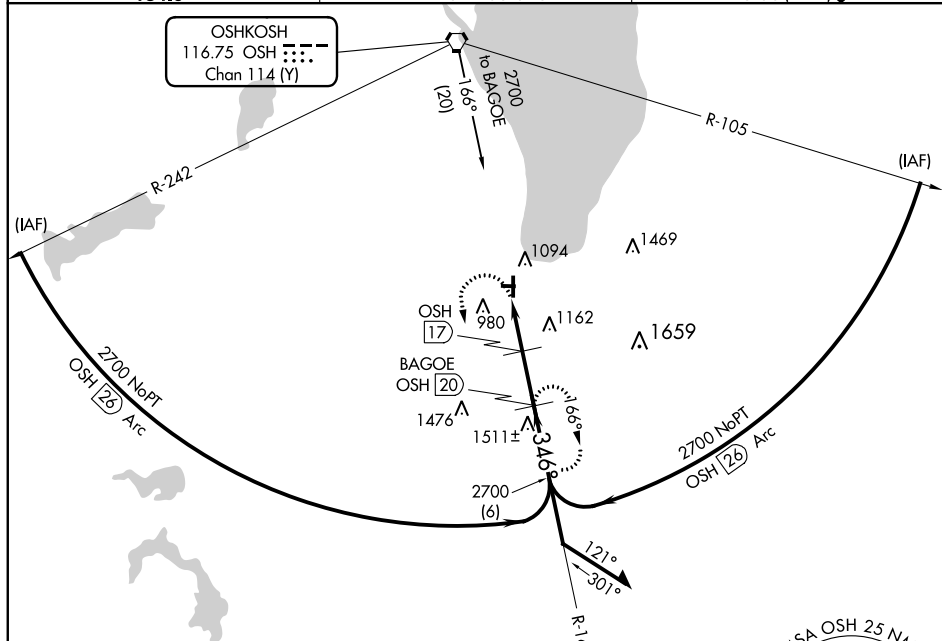
VORTAC OSH 116.75 Chn 114 (Y)	APP CRS 346°	Rwy Idg 5941 TDZE 795 Apt Elev 808
---	------------------------	---

VOR/DME RWY 36
FOND DU LAC COUNTY (FLD)

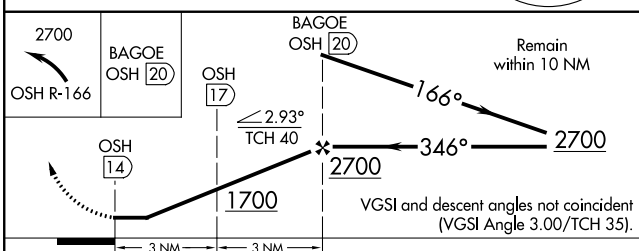
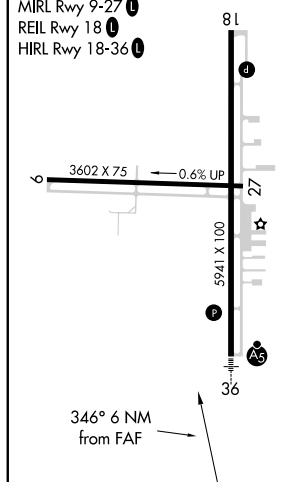
T Rwy 36 helicopter visibility reduction below $\frac{3}{4}$ SM NA. Circling Rwy 9, 27 NA at night. For inop ALS when using Oshkosh altimeter setting, increase S-36 Cat A/B visibility to 1 SM, **A** and Cat C/D to 1 $\frac{1}{2}$ SM. For inop ALS, increase S-36 Cat A/B visibility to 1 SM, Cat C/D to 1 $\frac{3}{4}$ SM. When local altimeter setting not received, use Oshkosh altimeter setting and increase all MDAs 40 feet and visibility S-36 Cat C $\frac{1}{2}$ SM and Circling Cat C/D $\frac{1}{4}$ SM.

MALSR 	MISSED APPROACH: Climbing left turn to 2700 on OSH R-166 to BAGOE/ 20 DME and hold.
---	---

ASOS	MILWAUKEE APP CON	UNICOM
134.0	127.0 263.075	123.05 (CTAF) L



ELEV 808	TDZE 795
MIRL Rwy 9-27 L	81
REIL Rwy 18 L	
HIRL Rwy 18-36 L	



CATEGORY	A	B	C	D
S-36	1420-3/4 625 (700-3/4)		1420-13/8 625 (700-13/8)	1420-1 1/2 625 (700-1 1/2)
C CIRCLING	1420-1 612 (700-1)		1520-2 712 (800-2)	1520-2 1/4 712 (800-2 1/4)