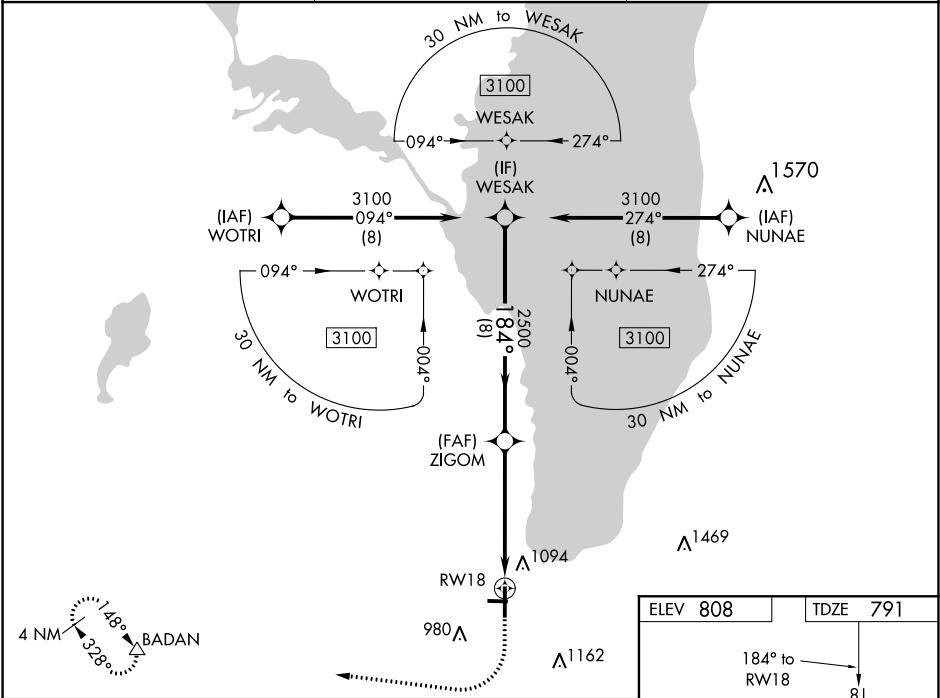


WAAS CH 99638 W18A	APP CRS 184°	Rwy Idg TDZE 791 Apt Elev 808	RNAV (GPS) RWY 18 FOND DU LAC COUNTY (F.L.D.)
--	------------------------	---	---

T Night landing: Rwy 9, 27 NA. Baro-VNAV NA when using Oshkosh altimeter setting. For uncompensated Baro-VNAV systems, LNAV/VNAV NA below -21°C (-5°F) or above 54°C (130°F). DME/DME RNP-0.3 NA. When local altimeter setting not received, use Oshkosh altimeter setting: increase LPV DA to 1072 feet and LNAV/VNAV DA to 1314 feet and all MDA 60 feet; increase LPV visibility all Cats, LNAV/VNAV visibility all Cats and LNAV Cat C/D visibility ½ mile; increase Circling Cat D visibility ¼ mile.

A MISSED APPROACH: Climb to 1300 then climbing right turn 3000 direct BADAN and hold.

ASOS 134.0	MILWAUKEE APP CON 127.0 263.075	UNICOM 123.05 (CTAF) 0
----------------------	---	----------------------------------



VGSI and RNAV glidepath not coincident (VGSI Angle 3.00/TCH 35).				
WESAK		ZIGOM		BADAN
3100		2500		3000
GP 3.00° TCH 45		184°		*1.6 NM to RWY18
2500		2500		*LNAV only
8 NM		3.7 NM		1.6 NM
CATEGORY	A	B	C	D
LPV DA	1041-7/8		250 (300-7/8)	
LNAV/VNAV DA	1283-13/4		492 (500-13/4)	
LNAV MDA	1320-1	529 (600-1)	1320-1 1/2	529 (600-1 1/2)
CIRCLING	1400-1	592 (600-1)	1520-2 712 (800-2)	1520-2 1/4 712 (800-2 1/4)

ELEV 808

TDZE 791

184° to RWY18

81

3602 X 75

0.6% UP

27

5941 X 100

36

REIL Rwy 18

MIRL Rwy 9-27

HIRL Rwy 18-36