

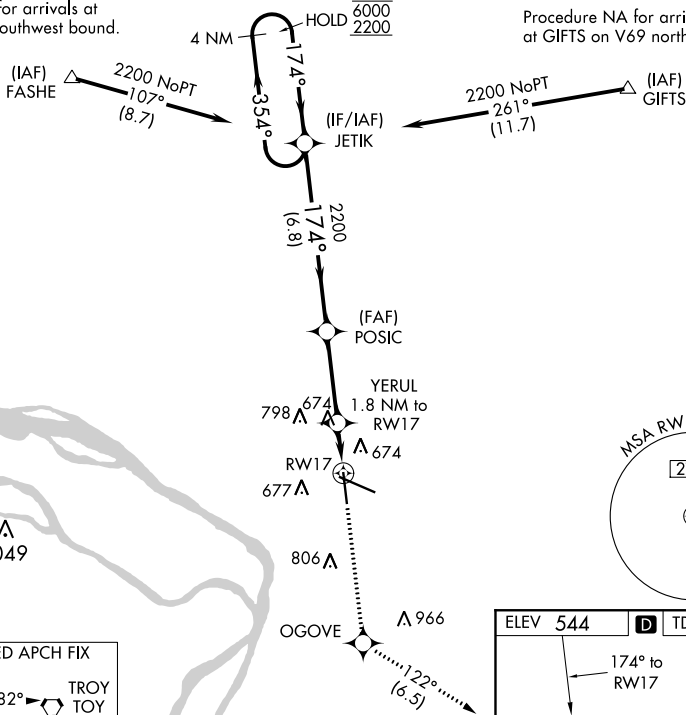
RNAV (GPS) RWY 17
ST LOUIS RGNL (ALN)

MISSED APPROACH: Climb to 3000
direct OGOVE and on track 122°
to TOY VORTAC and hold.

T Rwy 17 helicopter visibility reduction below $\frac{3}{4}$ SM NA.

UNICOM
122.95

Procedure NA for arrivals at GIFTS on V69 northbound.



IC

