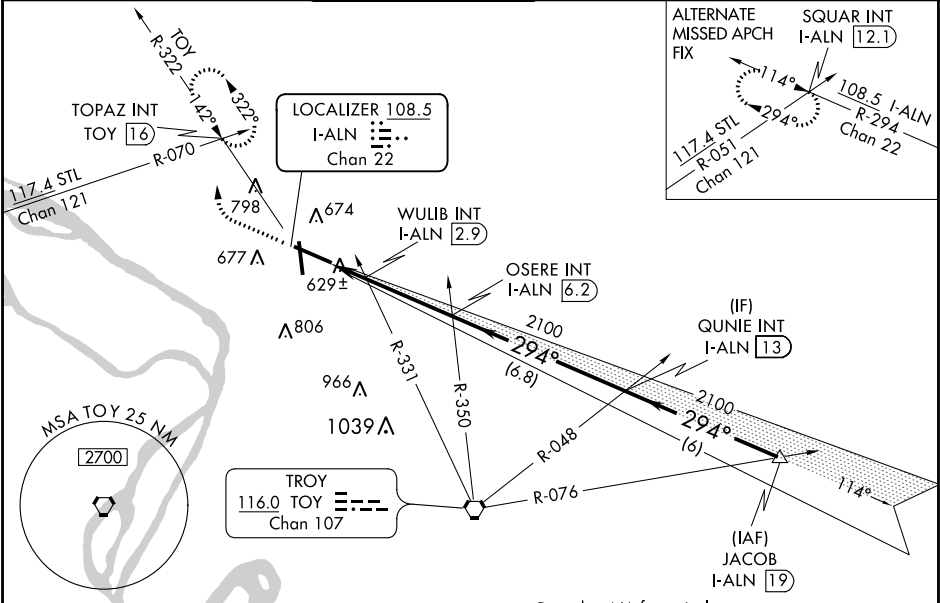


LOC/DME I-ALN	APP CRS	Rwy Idg	8099
108.5	294°	TDZE	531
Chan 22		Apt Elev	544

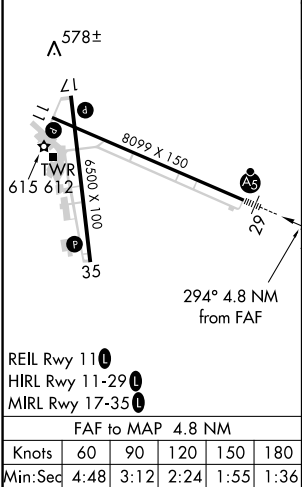
ILS or LOC RWY 29

ST LOUIS RGNL (ALN)

<div><div>⚠</div><div>For inop ALS, increase WULIB fix minimums S-LOC 29 Cats C/D visibility to 1 SM.</div></div>		<div>MALSR</div> <div></div>	<div>MISSED APPROACH: Climb to 1000 then climbing right turn to 2200 on heading 310° and on TOY VORTAC R-322 to TOPAZ INT/TOY 16 DME and hold.</div>		
ATIS 128.0	ST LOUIS APP CON 124.2 353.9	REGIONAL TOWER* 126.0(CTAF) 0 239.0	GND CON 120.2	CINC DEL 120.2 (when tower closed)	UNICOM 122.95



ELEV 544	D	TDZE 531
----------	---	----------



Procedure NA for arrivals at JACOB on V12 northeast bound.					
<div>1000 2200</div> <div>↑ hdg 310°</div>		TOY R-322	TOPAZ INT	*LOC only.	
<div>I-ALN 1.5</div>		WULIB INT I-ALN 2.9	OSERE INT I-ALN 6.2	QUNIE INT I-ALN 13	JACOB I-ALN 19
<div>294°</div>		<div>2100</div>	<div>2100</div>	<div>2100</div>	<div>2100</div>
<div>GS 3.00° TCH 55</div>					
1.4 NM		3.3 NM	6.8 NM	6 NM	
CATEGORY	A	B	C	D	
S-ILS 29	731-½ 200 (200-½)				
S-LOC 29	980-½	449 (500-½)	980-⅞ 449 (500-⅞)		
CIRCLING	1000-1	456 (500-1)	1000-1½ 456 (500-1½)	1100-2 556 (600-2)	
WULIB FIX MINIMUMS (DUAL VOR RECEIVERS OR DME REQUIRED)					
S-LOC 29	880-½	349 (400-½)	880-⅝ 349 (400-⅝)		
CIRCLING	1000-1	456 (500-1)	1000-1½ 456 (500-1½)	1100-2 556 (600-2)	