

LOC I-GVK 111.7	APP CRS 015°	Rwy Idg TDZE 754 Apt Elev 759
---------------------------	------------------------	---

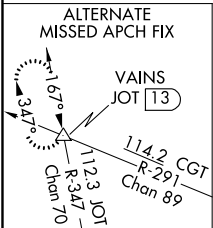
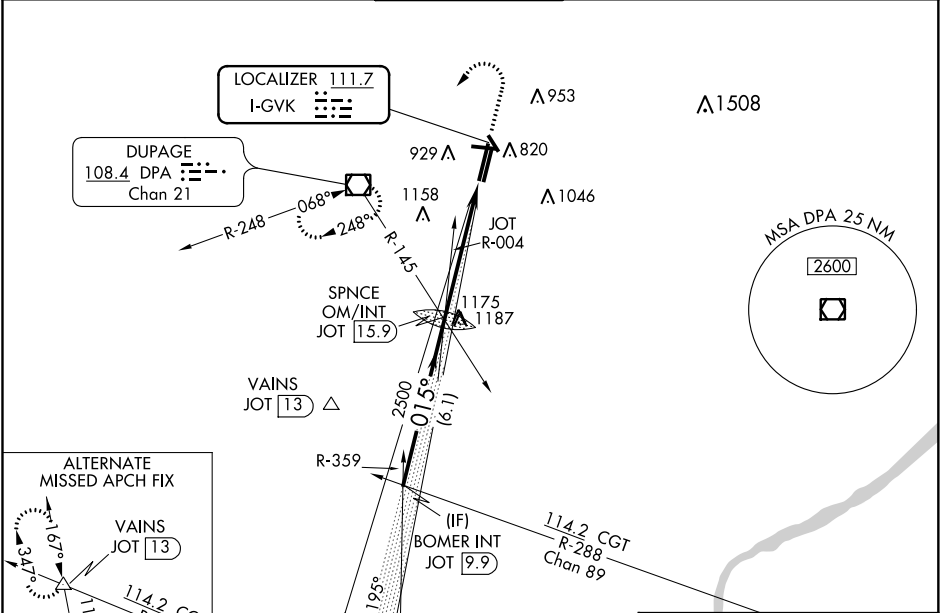
ILS or LOC RWY 2L
DUPAGE (DPA)

⚠ Circling Rwy 15, 28, 33 NA at night. When local altimeter setting not received, use Aurora altimeter setting and increase all DA 37 feet and all MDA 40 feet. For inop ALS, increase S-LOC 2L Cat C/D visibility to 2 SM. For inop ALS when using Aurora altimeter setting, increase S-LOC 2L Cat C/D visibility to 2½ SM.

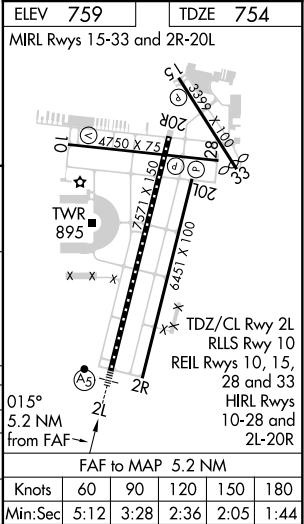
MALSR

MISSED APPROACH: Climb to 1200 then climbing left turn to 3000 direct DPA VOR/DME and hold, continue climb-in-hold to 3000.

ATIS 132.075	CHICAGO APP CON 133.5 349.0	DUPAGE TOWER 120.9 257.8	GND CON 121.8	CLNC DEL 119.75
------------------------	---------------------------------------	------------------------------------	-------------------------	---------------------------



	JOT VOR/DME	BOMER INT JOT [9.9]	SPNCE OM/INT JOT [15.9]	1200	3000	DPA
	3000	359°	015°	2472	2500	
	GS 3.00° TCH 50					
	9.9 NM	6.1 NM	5.2 NM			
CATEGORY	A	B	C	D		
S-ILS 2L		954-½	200 (200-½)			
S-LOC 2L	1500-½ 746 (800-½)	1500-¾ 746 (800-¾)	1500-1¾ 746 (800-1¾)			
CIRCLING	1500-1 741 (800-1)	1500-1¼ 741 (800-1¼)	1500-2¼ 741 (800-2¼)	1500-2½ 741 (800-2½)		



EC-3, 03 DEC 2020 to 31 DEC 2020

EC-3, 03 DEC 2020 to 31 DEC 2020