
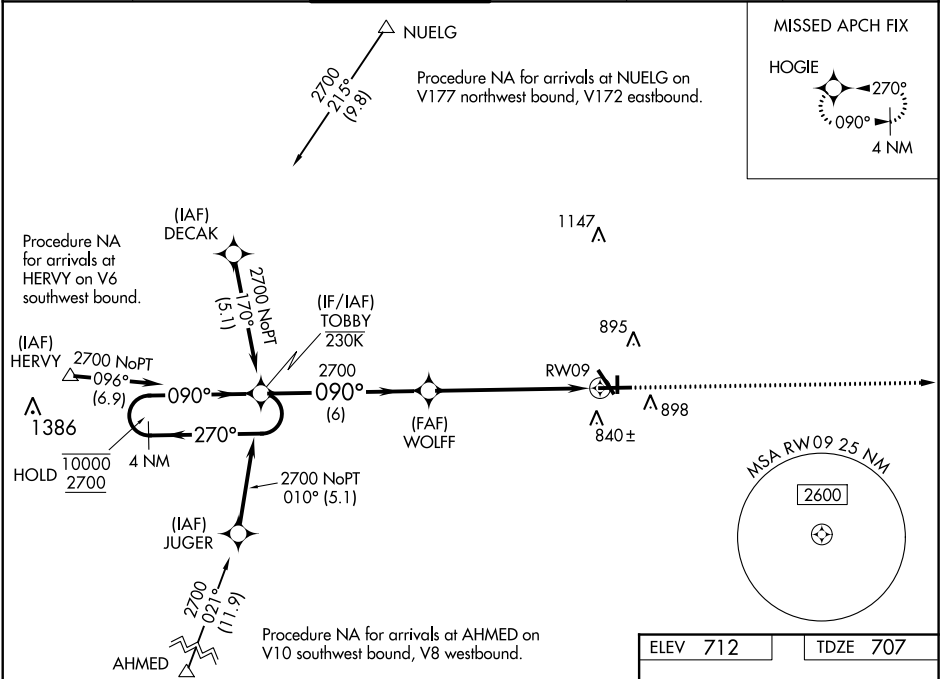


WAAS CH <b>45522</b> <b>W09A</b>	APP CRS <b>090°</b>	Rwy Idg <b>6501</b> TDZE <b>707</b> Apt Elev <b>712</b>
--	------------------------	---

RNAV (GPS) RWY 9

AURORA MUNI (ARR)

RNP APCH.				<div>MALSR</div> <div></div>	MISSED APPROACH: Climb to 2500 direct HOGIE and hold.
<div><div><div>▼</div></div><div>For uncompensated Baro-VNAV systems, LNAV/VNAV NA below -20°C or above 54°C. For inop ALS, increase LNAV Cat C/D visibility to 1½ SM.</div></div>					
ATIS 125.85	CHICAGO APP CON 133.5 349.0	AURORA TOWER★ 120.6 (CTAF) 0	GND CON 121.7	CLNC DEL 121.7 (When tower closed)	UNICOM 122.95 123.5



4 NM Holding Pattern		TOBBY		WOLFF		2500 HOGIE	
10000 2700				2700		*LNAV only.	
GP 3.00° TCH 45				2700		*1.5 NM to RW09	
		6 NM		4.6 NM		1.5 NM	
CATEGORY	A	B	C	D			
LPV DA	957-½		250 (300-½)				
LNAV/ VNAV DA	1035-½		328 (400-½)				
LNAV MDA	1220-½ 513 (600-½)		1220-1 513 (600-1)				
CIRCLING	1220-1 508 (600-1)		1220-1½ 508 (600-1½)		1320-2 608 (700-2)		

