

WAAS
CH **72941**
W15A

APP CRS
148°

Rwy Idg
TDZE **712**
Apt Elev **712**

RN503

5503

RNAV (GPS) RWY 15

AURORA MUNI (ARR)

RNP APCH.

▼

For uncompensated Baro-VNAV systems, LNAV/VNAV NA below -20°C or above 54°C.
Rwy 15 helicopter visibility reduction below ¾ SM NA.

MISSED APPROACH: Climb to 3000 direct UQITY and hold, continue climb-in-hold to 3000.

ATIS
125.85

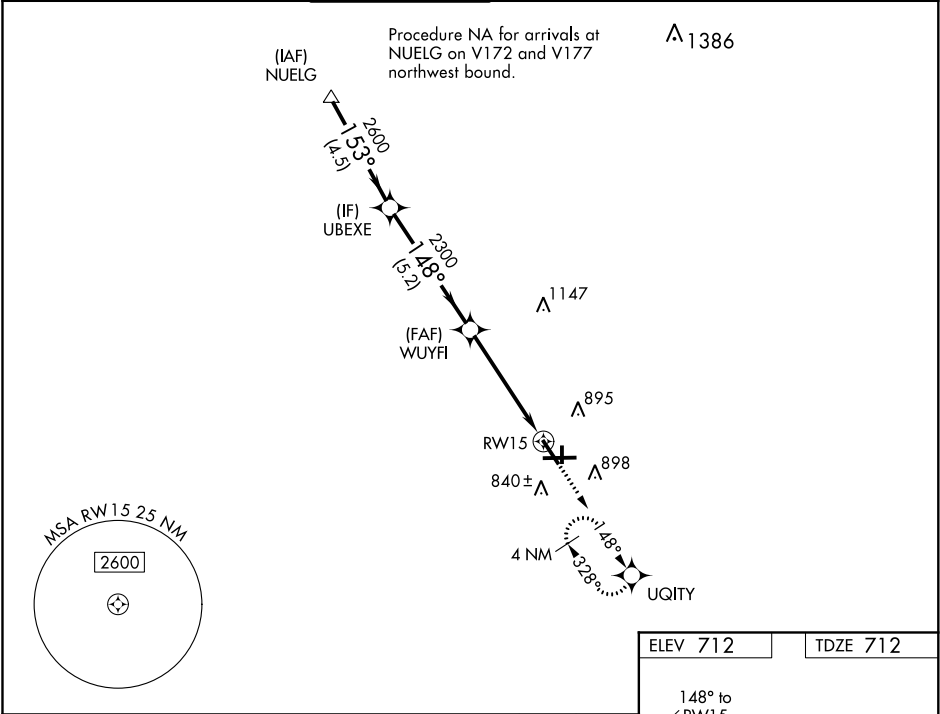
CHICAGO APP CON
133.5 349.0

AURORA TOWER★
120.6 (CTAF) 0

GND CON
121.7

CLNC DEL
121.7
(When tower closed)

UNICOM
122.95 123.5



UBEXE

WUYFI

3000

UQITY

VGSI and RNAV glidepath not coincident (VGSI Angle 3.00/TCH 34).

*LNAV only.

GP 3.00° TCH 45

2600

2300

1.48°

1.6 NM to RW15

5.2 NM

3.3 NM

1.6 NM

CATEGORY	A	B	C	D
LPV DA		962-¾	250 (300-¾)	
LNAV/VNAV DA		962-¾	250 (300-¾)	
LNAV MDA	1260-1	548 (600-1)	1260-1½	548 (600-1½)
CIRCLING	1260-1	548 (600-1)	1260-1½ 548 (600-1½)	1320-2 608 (700-2)

ELEV 712

TDZE 712

148° to RW15

5502 x 100

81

3198 x 75

6501

36

775

784

839±

HIRL Rwy 15-33 and 9-27

MIRL Rwy 18-36

REIL Rwy 15, 18, 27, and 36