

LOC/DME I-ROF  
**111.15**  
Chan **48** (Y)

APP CRS  
**328°**

Rwy Idg  
TDZE  
Apt Elev  
**5503**  
**705**  
**712**

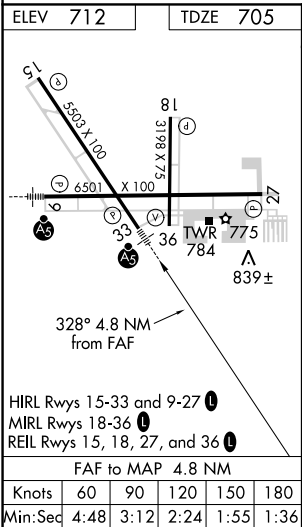
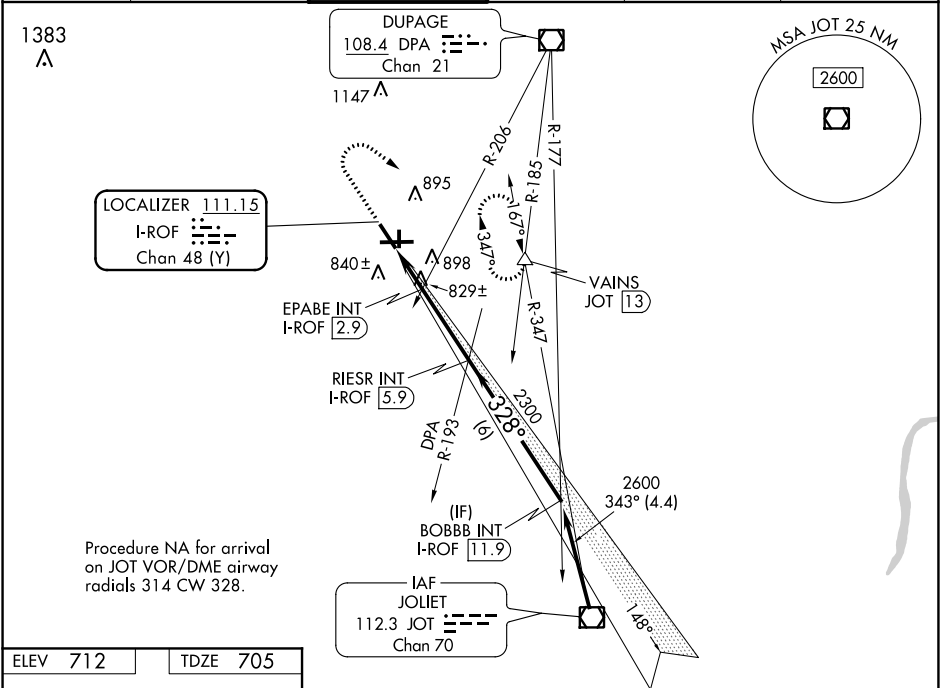
LOC RWY 33  
AURORA MUNI (A.R.R.)

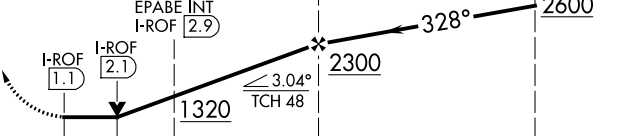
For inop ALS, increase S-LOC 33 Cats C and D visibility to 1 ¼ SM and EPABE FIX minimums S-LOC 33 Cats C and D visibility to 1 SM.

MALSR

MISSED APPROACH: Climb to 1400 then climbing right turn to 3000 on heading 146° and JOT VOR/DME R-347 to VAINS INT/JOT 13 DME and hold, continue climb-in-hold to 3000.

ATIS <b>125.85</b>	CHICAGO APP CON <b>133.5 349.0</b>	AURORA TOWER★ <b>120.6</b> (CTAF) <b>0</b>	GND CON <b>121.7</b>	CLNC DEL <b>121.7</b> (When tower closed)	UNICOM <b>122.95 123.5</b>
-----------------------	---------------------------------------	---	-------------------------	---	-------------------------------



1400 ↑	3000 hdg 146°	JOT R-347	VAINS △						
		EPABE INT I-ROF 2.9	RIESR INT I-ROF 5.9	BOBBB INT I-ROF 11.9					
									
CATEGORY		A		B		C		D	
S-LOC 33		1320-½ 615 (700-½)		1320-⅓ 615 (700-⅓)					
CIRCLING		1320-1 608 (700-1)		1320-⅔ 608 (700-⅔)		1320-2 608 (700-2)			
EPABE FIX MINIMUMS (DUAL VOR RECEIVERS or DME REQUIRED)									
S-LOC 33		1080-½ 375 (400-½)		1080-⅝ 375 (400-⅝)					
CIRCLING		1200-1 488 (500-1)		1200-1½ 488 (500-1½)		1320-2 608 (700-2)			