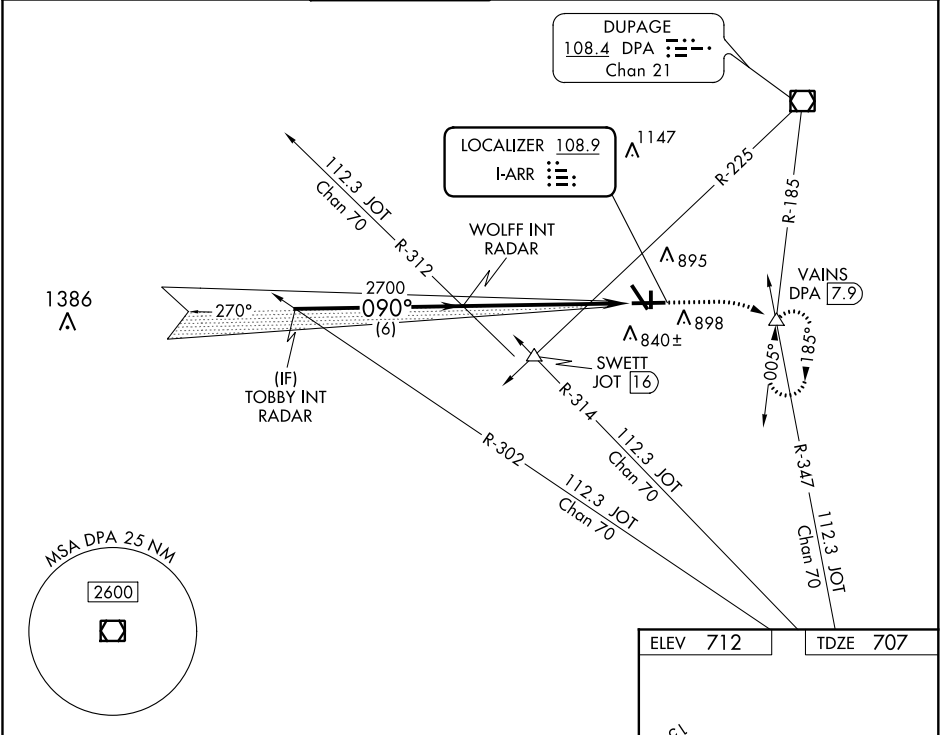


LOC I-ARR <b>108.9</b>	APP CRS <b>090°</b>	Rwy Idg TDZE Apt Elev <b>6501</b> <b>707</b> <b>712</b>	ILS or LOC RWY 9 AURORA MUNI (ARR)	
---------------------------	------------------------	--	---------------------------------------	--

RADAR required for procedure entry.			MALS	MISSED APPROACH: Climb to 1200 then climbing right turn to 3000 on heading 090° and on DPA VOR/DME R-185 to VAINS INT/DPA 7.9 DME and hold, continue climb-in-hold to 3000.	
For inop ALS, increase S-LOC 9 Cat C/D visibilities to 1½ SM.					
ATIS <b>125.85</b>	CHICAGO APP CON <b>133.5 349.0</b>	AURORA TOWER ★ <b>120.6 (CTAF)</b>	GND CON <b>121.7</b>	CLNC DEL <b>121.7</b> (When tower closed)	UNICOM <b>122.95 123.5</b>



		1200	3000	DPA	VAINS
TOBBY INT RADAR		↑	hdg 090°	R-185	△
WOLFF INT RADAR		2700			
GS 3.00° TCH 45		2700			
6 NM		6.1 NM			
CATEGORY	A	B	C	D	
S-ILS 9	907-½ 200 (200-½)				
S-LOC 9	1220-½ 513 (600-½)		1220-1 513 (600-1)		
CIRCLING	1220-1 508 (600-1)		1220-½ 508 (600-½)		1320-2 608 (700-2)

ELEV 712	TDZE 707
090° 6.1 NM from FAF	
MIRL Rwy 18-36	
HIRL Rwy 15-33 and 9-27	
REIL Rwy 15, 18, 27, and 36	
FAF to MAP 6.1 NM	
Knots	60 90 120 150 180
Min:Sec	6:06 4:04 3:03 2:26 2:02